

A catalogue of conserved Greater Yam accessions at ICAR-CIARI, Port Blair

**B. Augustine Jerard
V. Damodaran
S. Sunitha
M.N. Sheela
J. Suresh Kumar**



**All India Co-ordinated Research Project on Tuber Crops
Port Blair Centre
ICAR- Central Island Agricultural Research Institute
Port Blair-744105, Andaman and Nicobar Islands, India**



© ICAR- Central Island Agricultural Research Institute
Port Blair-744105
Andaman and Nicobar Islands, India
Phone: 03192-250341
E-mail: director.ciari@icar.gov.in
Web site: www.ciari.icar.gov.in

A catalogue of conserved Greater Yam accessions at ICAR-CIARI, Port Blair

Published by

**The Director
ICAR-CIARI
Port Blair - 744105**

Authors:

**B. Augustine Jerard
V. Damodaran
S. Sunitha
M.N. Sheela
J Suresh Kumar**

Photo Credits:

B Augustine Jerard

Citation: Augustine Jerard et al (2023). A catalogue of conserved Greater Yam accessions at ICAR-CIARI, Port Blair,

April 2023

Contents

INTRODUCTION	2
Greater Yam	4
Achin White / ADP-08	6
Achin Pink (IC-0623827)	10
Domrit-1 / ADP-09	14
Tilong chung / ADP-10	18
Takinya Takave (IC-0623830)	22
Kaniya / ADP-11	26
Antounth / ADP-12	30
TAM-1 / ADP-01	34
TAM-2 / ADP-02	38
TAM-3 (IC-0623826)	42
Nic-DA-1 (IC-592097)	46
Nic-DA-2 / ADP-03	50
Nic-DA-3 / ADP-04	54
Nic-DA-4 / ADP-05	58
Nic-DA-5 / ADP-06	62
Nic-DA-6 / ADP-07	66
CARI-DA-1 (IC-592096)	70
DA-3 (IC-0623824)	74
MH-DA-1 / AD-06	78
HL-1 / ADS-01	82
HB-2 (IC-0623833)	86
HB-DA-1 / AD-01	90
HB-DA-2 / AD-02	94
CDA-1 (IC-0623829)	98
SG-1 / ADS-02	102
RKP-1 (IC-0623831)	106
RKP-2 / AD-03	110
RKP-4 (IC-0623832)	114
RKP-5 / AD-04	118
RKP-6 / AD-05	122
Bolta (IC-0623825)	126
TDA-1 (IC-0623828)	130

INTRODUCTION

Root and tuber crops are the third important food crops of humankind after cereals and grain legumes, have a remarkable position in the food security of the populations due to its high calorific value and carbohydrate content. Their capacity to grow under rain fed conditions as well as sustainability against the drought condition is remarkable.

Andaman and Nicobar Island is a chain of 572 Islands stretched from North to South located about 1200 km of mainland on longitude 93⁰-94⁰ East and latitude 6⁰ -17⁰ north. Out of the 572 islands & islets, thirty-eight islands are inhabited. About 50% of the population is directly dependent of Agriculture & Allied Activities. The total land being used for agriculture is small due to paucity of non-forested land and numerous competing infrastructural demands. Thus, only about 6% of the non-forested land i.e., about 50,000 ha was used for agriculture purposes of which 10561 ha under field crops and 29774 ha under plantation crops. Devastating Tsunami in 2004 has further damaged permanently about 9% (4206 ha) of pre-Tsunami Agriculture Land. Half of the agriculture land is used for coconut plantation, 10% is for areca nut and 20% for Fruits, Vegetables and Root Crops and 20% is for Paddy Cultivation. Islands enjoys tropical humid climate and receive rainfall of 3000 mm commencing from May-January and receive both Southwest and Northwest monsoon. The average mean temperature varies from 23° C to 32° C with 70- 90% humidity.

Andaman and Nicobar Islands holds a rich genetic diversity of tropical root and tuber crops viz. Aroids, Yams, and several minor tuber crops. Tubers and aroids are the secondary foods for the settlers but constitute the important diets of the native Nicobari, Onge and Jarawa tribes. The commonly cultivated tropical tuber crops in Andaman & Nicobar Islands are Cassava (*Manihot esculenta*), Sweet potato (*Ipomoea batatas*), Elephant foot yam (*Amorphophallus paeoniifolius*), Taro (*Colocasia esculenta* var. *antiquorum*), Bunda (*Colocasia esculenta* var. *esculenta*), Tannia (*Xanthosoma sagittifolium* and Greater yam (*Dioscorea alata*). Among these, the Greater Yam locally called *Nicobari Aloo* or *Matti aloo* and *Ratalu* is a preferred tuber among the local people. The Nicobari tribes are one among the native tribes Andaman & Nicobar Islands and they live in 12 different islands located in Nicobar Districts and Harminder Bay of Little Andaman in South Andaman. They cultivate, conserve, use and distribute the tubers of Nicobari Aloo among themselves over the centuries after centuries. They have the joint family system called “Tuhet” and each tuhet owns the land, coconut, tuber crops & livestock. Each tuhet cultivate different.

varieties of Nicobari Aloo along with other crops (1.0-1.5 ha for each tuhet) for the food and among tuber crops the Nicobari Aloo forms major part in their diet throughout the year. They do celebrate “Bada din” and Church festival wherein they sale different Agricultural produce (Nicobari Aloo, Banana, Jackfruit & coconut products) and livestock and revenue generated through church festival is donated to the church for the development work.

The Niobarese have conserved the traditional varieties of Nicobari Aloo such as Achin (Pink flesh), Domrit (Aroma type), Bolta, Paltu, Kaniya, Takiniya Takavu (Higher yield) and can identify the varieties based on the tuber shape, flesh colour, colour of the leaf and aroma of the tuber and each variety are meant for specific uses. The indigenous and unique conservation practices of Nicobari aloo by the Tribal Council has brought laurels to the Islands as it has been recognized by the Protection of Plant Varieties and Farmers Rights Authority (PPVFRA), GOI, New Delhi for prestigious Plant Genome Saviour Community Award 2014-15.

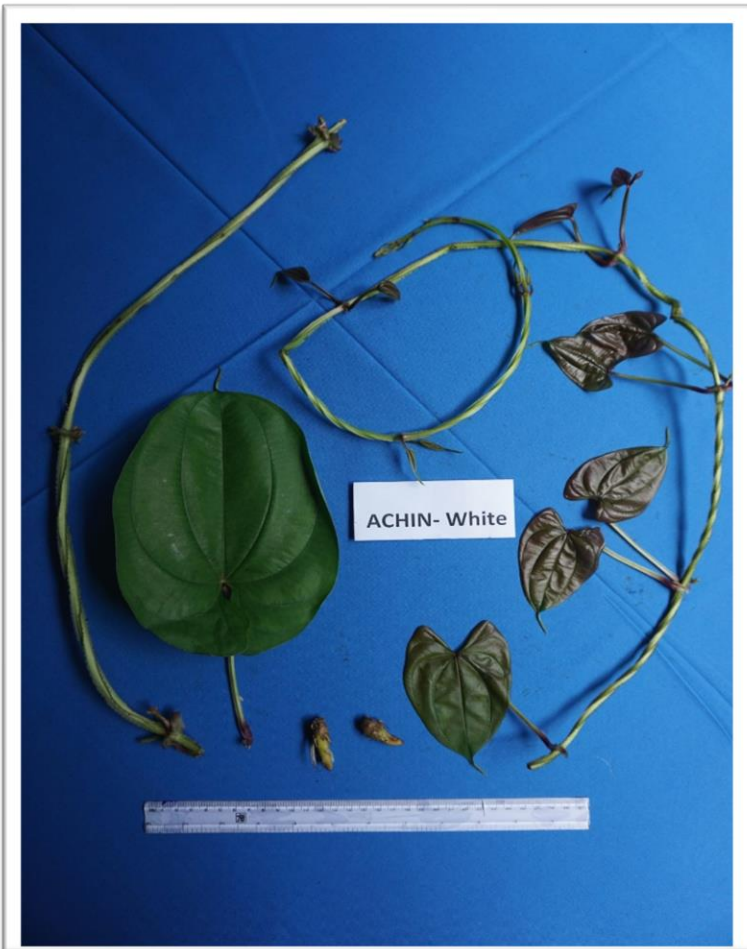
A centre of AICRP on Tuber Crops functioning at ICAR- CIARI, Port Blair since the year 2000 has contributed to introduction of improved varieties of tuber crops, improved production, and protection techniques in the Islands besides the extensive collection and utilization of local accessions of different tuber crops. The centre has collected about forty unique types of Greater Yam from the remote places of Islands and established the conservatory at ICAR-CIARI, Port Blair. This catalogue document the morphological, tuber and biochemical traits of thirty-two conserved Greater Yam accessions at ICAR-CIARI, Port Blair which will be useful for the crop improvement and production of these crops to enhance food security in Islands. The collections included the farmers varieties from car Nicobar and the cultivated types from different islands which are known for their growth, yield, and quality. The accessions are characterised for ninety-six traits using standard descriptors used for Greater Yam. The pictorial documentation of the leaves, growing twig, stem, aerial tubers, leaf arrangement, growth habit, tuber traits such as shape and pulp colour were undertaken and depicted in this catalogue.

Greater Yam

Taxonomic Information

Kingdom	Plantae - Plants
Subkingdom	Tracheobionta - Vascular plants
Superdivision	Spermatophyta - Seed plants
Division	Magnoliophyta - Flowering plants
Class	Liliopsida - Monocotyledons
Subclass	Liliidae
Order	Liliales
Family	Dioscoreaceae
Genus	<i>Dioscorea</i>
Species	<i>Dioscorea alata</i> L.



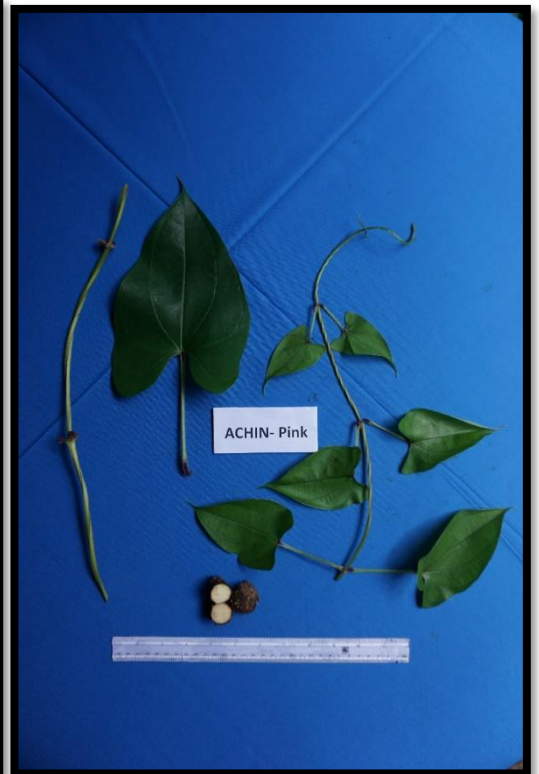


Achin White / ADP-08

Accession name / number		Achin White / ADP-08
Place of Collection		Tapoinming, Car Nicobar
Year of collection		2017
Stem traits		
1	Days to emergence	31.67
2	Stem length at 20 days of emergence(cm)	75.00
3	Inter node number at 20 days	4.67
4	Stem colour at 20 days of emergence	Green
5	Presence/Absence of waxiness on stem	Absent
6	Presence/absence of wings	Present
7	Wing colour	Purple
8	Presence/absence of hairs	Absent
9	Presence/abs of spine	Absent
10	Presence/abs of coloured spot at spine base	Absent
11	Waxiness of plant	Low
Growth traits		
12	Plant type	Climbing
13	Vigour	High
14	Twining habit	Yes
15	Twining direction	Anticlockwise
16	Stem height	2-10 m
17	No. of stems/plant	1.67
18	Stem colour	Purplish green
19	No. of internodes to first branching	2.00
20	No. of branches above ground	2.00
21	Stem diameter at 15 cm from base (cm)	2.13
22	Stem cross section shape	Quadrangular
23	Internodal length at 1 m height (cm)	18.83
24	Absence/presence of waxiness	Absent
25	Absence/presence of wings	Present
26	Wing position	Above base
27	Wing size at 1 m height	1-2 mm
28	Wing colour	Purple
29	Presence/absence of ridges	Present
30	Scale leaf position	Both
Leaf traits- Tender leaves		
31	Leaf colour	Yellowish
32	Leaf margin colour	Purple
33	Vein colour	Green
34	Petiole colour	All green with purple base
35	Petiole wing colour	Purple
Leaf traits- Matured leaves		
36	Position of leaves	Opposite
37	Leaf density	High

38	Leaf type	Simple
39	Leatheriness	No
40	Leaf colour	Dark green
41	Leaf vein colour (upper)	Green
42	Leaf vein colour (lower surface)	Green
43	Leaf margin colour	Green
44	Leaf shape	Cordate
45	Leaf apex shape	Acute
46	Distance between lobes	No measurable distance
47	Upward folding of leaf along main vein	Strong
48	Position of widest part of leaf	Middle
49	Tip length	> 5 mm
50	Tip colour	Light green
51	Petiole length	6-9 cm
52	PL in correlation to leaf blade	Long (> 2 cm)
53	Petiole colour	All green with purple base
54	Petiole wing colour	Purple
Aerial tuber traits		
55	Absence/presence of aerial tuber	Present
56	Tuber shape	Oval
57	A tuber diameter	6-10 cm
58	Skin colour	Dark brown
59	Surface texture	Rough
60	Absence/presence of bumps	absent
61	Skin thickness	Thin
62	Flesh colour	Outer purple/inner yellowish
Tuber traits		
63	Tuber Length(cm)	49.97
64	Tuber Width(cm)	25.80
65	Per Tuber Weight(kg)	0.73
66	Total Yield	0.91
67	Tuber Shape	Cylindrical
68	Tendency of tuber branch	highly branched
69	Place where tuber branch	Middle
70	Roots on the tuber surface	Few
71	Place of roots on the tuber	Entire Tuber
72	Absence /presence of blisters on tuber surface	Absence
73	Absence/presence of cracks on the tuber surface	Presence
Cooking quality traits		
74	Ease of peeling	Easy
75	Preferred cooking method	Boiled
76	Poundability of boiled tuber	Good
77	Cooking time to softness	20 min
78	Discolouration cooking water	Very High
79	Appearance of tuber after cooking	Good
80	Colour of tuber after cooking	White, Not Coloured

81	Attractiveness of cooked tuber	High
82	Erosion of tuber upon cooking	No
83	Texture of cooked tuber	Smooth
84	Stickiness of cooked tuber	Sticky
85	Flavour of cooked tuber	Very Acceptable
86	Absence /Presence of moisture on cooked tuber	Absence
87	Bitterness of cooked tuber	Not bitter
88	Sweetness of cooked tuber	Not Sweet
89	Overall assessment of cooked tuber	High
Tuber quality traits		
90	Dry matter (%)	29.21
91	Sugar (% FW)	0.36
92	Starch (% FW)	10.27
93	Fat (% DW)	1.30
94	Fibre (%DW)	0.74
95	Protein (%)	2.63
96	Anthracnose Susceptibility	Low



Achin Pink (IC-0623827)

Accession name/number		Achin Pink (IC-0623827)
Place of Collection		Big Lapathy, Car Nicobar
Year of collection		2014
Stem traits		
1	Days to emergence	41.67
2	Stem length at 20 days of emergence(cm)	65.00
3	Inter node number at 20 days	4.67
4	Stem colour at 20 days of emergence	Purplish Green
5	Presence/Absence of waxiness on stem	Absent
6	Presence/absence of wings	Present
7	Wing colour	Purple
8	Presence/absence of hairs	Absent
9	Presence/abs of spine	Absent
10	Presence/abs of coloured spot at spine base	Absent
11	Waxiness of plant	Low
Growth traits		
12	Plant type	Climbing
13	Vigour	High
14	Twining habit	Yes
15	Twining direction	Anticlockwise
16	Stem height	>10m
17	No. of stems/plant	1.67
18	Stem colour	Purplish green
19	No. of internodes to first branching	7.00
20	No. of branches above ground	2.00
21	Stem diameter at 15 cm from base (cm)	3.17
22	Stem cross section shape	Quadrangular
23	Internodal length at 1 m height (cm)	18.83
24	Absence/presence of waxiness	Absent
25	Absence/presence of wings	Present
26	Wing position	Above base
27	Wing size at 1 m height	>2 mm
28	Wing colour	Purple
29	Presence/absence of ridges	Present
30	Scale leaf position	Alternate
Leaf traits- Tender leaves		
31	Leaf colour	Yellowish
32	Leaf margin colour	Purple
33	Vein colour	Green
34	Petiole colour	All green with purple base
35	Petiole wing colour	Purple

Leaf traits- Matured leaves		
36	Position of leaves	Alternate
37	Leaf density	High
38	Leaf type	Simple
39	Leatheriness	Yes
40	Leaf colour	Dark green
41	Leaf vein colour (upper)	Green
42	Leaf vein colour (lower surface)	Green
43	Leaf margin colour	Green
44	Leaf shape	Cordate
45	Leaf apex shape	Acute
46	Distance between lobes	Intermediate
47	Upward folding of leaf along main vein	Strong
48	Position of widest part of leaf	Third upper
49	Tip length	> 5 mm
50	Tip colour	Light green
51	Petiole length	> 10 cm
52	PL in correlation to leaf blade	Long (> 2 cm)
53	Petiole colour	All green with purple base
54	Petiole wing colour	Purple
Aerial tuber traits		
55	Absence/presence of aerial tuber	Present
56	Tuber shape	Irregular
57	A tuber diameter	> 10 cm
58	Skin colour	Dark brown
59	Surface texture	Rough
60	Absence/presence of bumps	absent
61	Skin thickness	Thin
62	Flesh colour	Yellowish white
Tuber traits		
63	Tuber Length(cm)	25.67
64	Tuber Width(cm)	30.13
65	Per Tuber Weight(kg)	0.78
66	Total Yield	1.45
67	Tuber Shape	Cylindrical
68	Tendency of tuber branch	Single branched
69	Place where tuber branch	Upper third
70	Roots on the tuber surface	Few
71	Place of roots on the tuber	Entire Tuber
72	Absence /presence of blisters on tuber surface	Absence
73	Absence/presence of cracks on the tuber surface	Absence
Cooking quality traits		
74	Ease of peeling	Easy
75	Preferred cooking method	Boiled
76	Poundability of boiled tuber	Good
77	Cooking time to softness	20 min

78	Discolouration cooking water	Intermediate
79	Appearance of tuber after cooking	Good
80	Colour of tuber after cooking	Highly Coloured
81	Attractiveness of cooked tuber	Low
82	Erosion of tuber upon cooking	No
83	Texture of cooked tuber	Smooth
84	Stickiness of cooked tuber	Sticky
85	Flavour of cooked tuber	Very Acceptable
86	Absence /Presence of moisture on cooked tuber	Absence
87	Bitterness of cooked tuber	Not bitter
88	Sweetness of cooked tuber	Sweet
89	Overall assessment of cooked tuber	Intermediate
Tuber quality traits		
90	Dry matter (%)	32.63
91	Sugar (% FW)	0.43
92	Starch (% FW)	11.44
93	Fat (% DW)	0.60
94	Fibre (%DW)	0.70
95	Protein (%)	2.63
96	Anthracnose Susceptibility	Low



Domrit-1 / ADP-09

Accession name/number		Domrit-1 / ADP-09
Place of Collection		Car Nicobar
Year of collection		2017
Stem traits		
1	Days to emergence	41.33
2	Stem length at 20 days of emergence(cm)	80.00
3	Inter node number at 20 days	5.00
4	Stem colour at 20 days of emergence	Purple
5	Presence/Absence of waxiness on stem	Absent
6	Presence/absence of wings	Present
7	Wing colour	Purple
8	Presence/absence of hairs	Absent
9	Presence/abs of spine	Absent
10	Presence/abs of coloured spot at spine base	Absent
11	Waxiness of plant	Low
Growth traits		
12	Plant type	Climbing
13	Vigour	High
14	Twining habit	Yes
15	Twining direction	Anticlockwise
16	Stem height	>10m
17	No. of stems/plant	1.00
18	Stem colour	Purplish green
19	No. of internodes to first branching	1.33
20	No. of branches above ground	2.00
21	Stem diameter at 15 cm from base (cm)	2.07
22	Stem cross section shape	Quadrangular
23	Internodal length at 1 m height (cm)	10.97
24	Absence/presence of waxiness	Absent
25	Absence/presence of wings	Present
26	Wing position	Above base
27	Wing size at 1 m height	1-2 mm
28	Wing colour	Purple
29	Presence/absence of ridges	Present
30	Scale leaf position	Both
Leaf traits- Tender leaves		
31	Leaf colour	Yellowish
32	Leaf margin colour	Purple
33	Vein colour	Purple
34	Petiole colour	All green with purple base
35	Petiole wing colour	Purple
Leaf traits- Matured leaves		
36	Position of leaves	Opposite
37	Leaf density	High

38	Leaf type	Simple
39	Leatheriness	Yes
40	Leaf colour	Dark green
41	Leaf vein colour (upper)	Green
42	Leaf vein colour (lower surface)	Green
43	Leaf margin colour	Green
44	Leaf shape	Sagittate long
45	Leaf apex shape	Acute
46	Distance between lobes	Intermediate
47	Upward folding of leaf along main vein	Strong
48	Position of widest part of leaf	Middle
49	Tip length	> 5 mm
50	Tip colour	Light green
51	Petiole length	>_10 cm
52	PL in correlation to leaf blade	Long (> 2 cm)
53	Petiole colour	All green with purple base
54	Petiole wing colour	Purple
Aerial tuber traits		
55	Absence/presence of aerial tuber	Present
56	Tuber shape	Oval
57	A tuber diameter	6-10 cm
58	Skin colour	Light brown
59	Surface texture	Rough
60	Absence/presence of bumps	absent
61	Skin thickness	Thin
62	Flesh colour	Yellowish white
Tuber traits		
63	Tuber Length(cm)	17.11
64	Tuber Width(cm)	24.38
65	Per Tuber Weight(kg)	0.44
66	Total Yield	1.56
67	Tuber Shape	Irregular
68	Tendency of tuber branch	highly branched
69	Place where tuber branch	Upper third
70	Roots on the tuber surface	Many
71	Place of roots on the tuber	Entire Tuber
72	Absence /presence of blisters on tuber surface	Presence
73	Absence/presence of cracks on the tuber surface	Absence
Cooking quality traits		
74	Ease of peeling	Easy
75	Preferred cooking method	Baked and boiled
76	Poundability of boiled tuber	Good
77	Cooking time to softness	20 min
78	Discolouration cooking water	Very Low
79	Appearance of tuber after cooking	Good
80	Colour of tuber after cooking	White, Not Coloured

81	Attractiveness of cooked tuber	Low
82	Erosion of tuber upon cooking	No
83	Texture of cooked tuber	Smooth
84	Stickiness of cooked tuber	Sticky
85	Flavour of cooked tuber	Very Acceptable
86	Absence /Presence of moisture on cooked tuber	Absence
87	Bitterness of cooked tuber	Not bitter
88	Sweetness of cooked tuber	Not Sweet
89	Overall assessment of cooked tuber	High
Tuber quality traits		
90	Dry matter (%)	29.71
91	Sugar (% FW)	0.45
92	Starch (% FW)	17.07
93	Fat (% DW)	1.05
94	Fibre (%DW)	0.44
95	Protein (%)	2.19
96	Anthracnose Susceptibility	Low

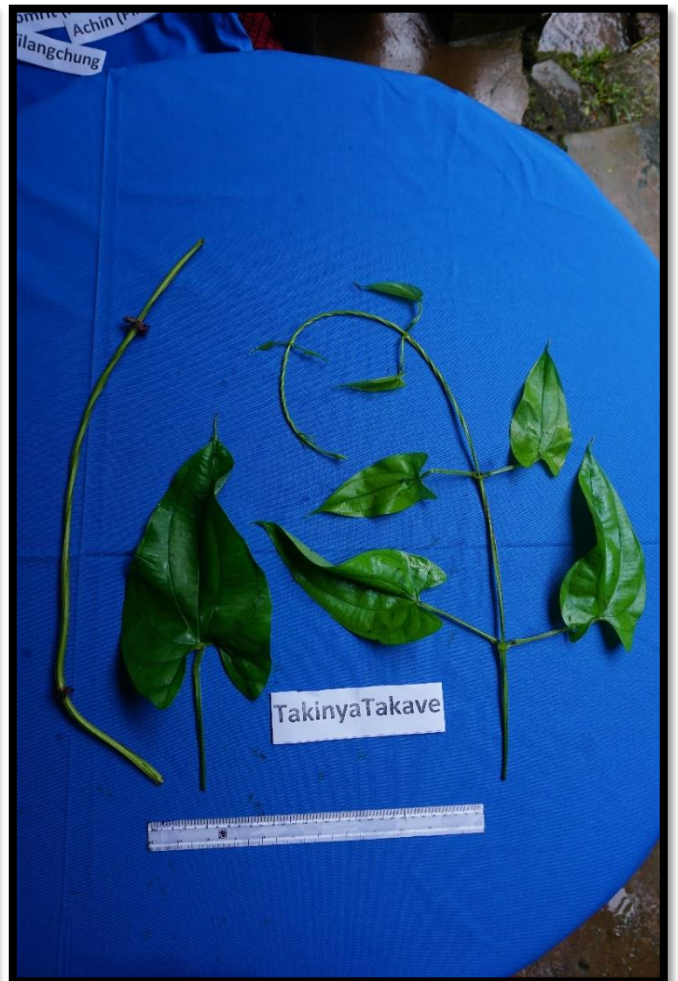


Tilong chung / ADP-10

Accession name/number		Tilong chung or Tilang Chang / ADP-10
Place of Collection		Car Nicobar
Year of collection		2017
Stem traits		
1	Days to emergence	38.00
2	Stem length at 20 days of emergence(cm)	49.67
3	Inter node number at 20 days	3.00
4	Stem colour at 20 days of emergence	Purplish Green
5	Presence/Absence of waxiness on stem	Absent
6	Presence/absence of wings	Present
7	Wing colour	Green
8	Presence/absence of hairs	Absent
9	Presence/abs of spine	Absent
10	Presence/abs of coloured spot at spine base	Absent
11	Waxiness of plant	Medium
Growth traits		
12	Plant type	Climbing
13	Vigour	High
14	Twining habit	Yes
15	Twining direction	Anticlockwise
16	Stem height	>10m
17	No. of stems/plant	1.00
18	Stem colour	Green
19	No. of internodes to first branching	13.33
20	No. of branches above ground	1.00
21	Stem diameter at 15 cm from base (cm)	2.20
22	Stem cross section shape	Quadrangular
23	Internodal length at 1 m height (cm)	14.33
24	Absence/presence of waxiness	Absent
25	Absence/presence of wings	Present
26	Wing position	Above base
27	Wing size at 1 m height	1-2 mm
28	Wing colour	Green
29	Presence/absence of ridges	Present
30	Scale leaf position	Opposite
Leaf traits- Tender leaves		
31	Leaf colour	Yellowish
32	Leaf margin colour	Green
33	Vein colour	Green
34	Petiole colour	All green with purple base
35	Petiole wing colour	Green

Leaf traits- Matured leaves		
36	Position of leaves	Opposite
37	Leaf density	High
38	Leaf type	Simple
39	Leatheriness	No
40	Leaf colour	Dark green
41	Leaf vein colour (upper)	Green
42	Leaf vein colour (lower surface)	Green
43	Leaf margin colour	Green
44	Leaf shape	Sagittate long
45	Leaf apex shape	Acute
46	Distance between lobes	Intermediate
47	Upward folding of leaf along main vein	Strong
48	Position of widest part of leaf	Middle
49	Tip length	> 5 mm
50	Tip colour	Light green
51	Petiole length	6-9 cm
52	PL in correlation to leaf blade	Long (> 2 cm)
53	Petiole colour	All green with purple base
54	Petiole wing colour	Green
Aerial tuber traits		
55	Absence/presence of aerial tuber	Absent
56	Tuber shape	NA
57	A tuber diameter	NA
58	Skin colour	NA
59	Surface texture	NA
60	Absence/presence of bumps	NA
61	Skin thickness	NA
62	Flesh colour	NA
Tuber traits		
63	Tuber Length(cm)	13.91
64	Tuber Width(cm)	38.52
65	Per Tuber Weight(kg)	0.96
66	Total Yield	1.01
67	Tuber Shape	Round
68	Tendency of tuber branch	highly branched
69	Place where tuber branch	Upper third
70	Roots on the tuber surface	Few
71	Place of roots on the tuber	Entire Tuber
72	Absence /presence of blisters on tuber surface	Absence
73	Absence/presence of cracks on the tuber surface	Presence
Cooking quality traits		
74	Ease of peeling	Easy
75	Preferred cooking method	Baked and boiled
76	Poundability of boiled tuber	Poor
77	Cooking time to softness	30 min

78	Discolouration cooking water	Intermediate
79	Appearance of tuber after cooking	Good
80	Colour of tuber after cooking	Highly Coloured
81	Attractiveness of cooked tuber	Intermediate
82	Erosion of tuber upon cooking	No
83	Texture of cooked tuber	Fibrous
84	Stickiness of cooked tuber	Sticky
85	Flavour of cooked tuber	Acceptable
86	Absence /Presence of moisture on cooked tuber	Absence
87	Bitterness of cooked tuber	Not bitter
88	Sweetness of cooked tuber	Not Sweet
89	Overall assessment of cooked tuber	Low
Tuber quality traits		
90	Dry matter (%)	33.25
91	Sugar (% FW)	0.37
92	Starch (% FW)	14.25
93	Fat (% DW)	0.72
94	Fibre (%DW)	0.85
95	Protein (%)	1.72
96	Anthracnose Susceptibility	Medium

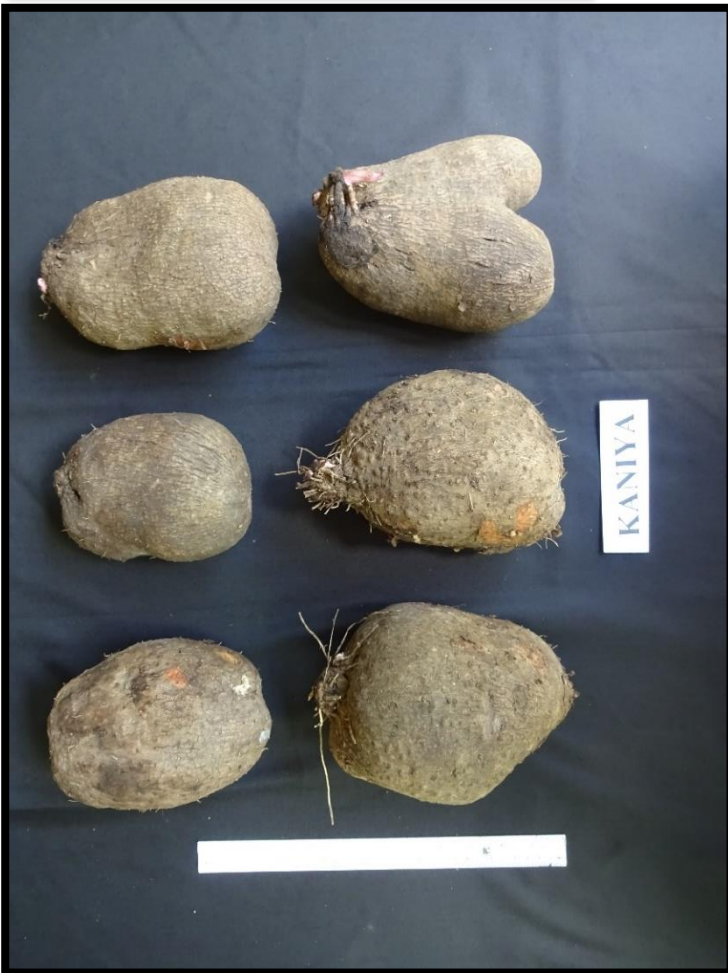


Takinya Takave (IC-0623830)

Accession name/number		Takinya Takave (IC-0623830)
Place of Collection		Tapoinming, Car Nicobar
Year of collection		2014
Stem traits		
1	Days to emergence	42.00
2	Stem length at 20 days of emergence(cm)	58.67
3	Inter node number at 20 days	4.67
4	Stem colour at 20 days of emergence	Green
5	Presence/Absence of waxiness on stem	Absent
6	Presence/absence of wings	Present
7	Wing colour	Green
8	Presence/absence of hairs	Absent
9	Presence/abs of spine	Absent
10	Presence/abs of coloured spot at spine base	Absent
11	Waxiness of plant	Medium
Growth traits		
12	Plant type	Climbing
13	Vigour	High
14	Twining habit	Yes
15	Twining direction	Climbing
16	Stem height	2-10 m
17	No. of stems/plant	1.33
18	Stem colour	Brownish green
19	No. of internodes to first branching	3.00
20	No. of branches above ground	2.67
21	Stem diameter at 15 cm from base (cm)	2.10
22	Stem cross section shape	Octagonal
23	Internodal length at 1 m height (cm)	12.03
24	Absence/presence of waxiness	Absent
25	Absence/presence of wings	Present
26	Wing position	Above base
27	Wing size at 1 m height	>2 mm
28	Wing colour	Purple
29	Presence/absence of ridges	Present
30	Scale leaf position	Opposite
Leaf traits- Tender leaves		
31	Leaf colour	Yellowish
32	Leaf margin colour	Green
33	Vein colour	Green
34	Petiole colour	All green with purple base

35	Petiole wing colour	Purple
Leaf traits- Matured leaves		
36	Position of leaves	Opposite
37	Leaf density	High
38	Leaf type	Simple
39	Leatheriness	No
40	Leaf colour	Yellowish
41	Leaf vein colour (upper)	Yellowish
42	Leaf vein colour (lower surface)	Green
43	Leaf margin colour	Green
44	Leaf shape	Sagittate long
45	Leaf apex shape	Acute
46	Distance between lobes	Intermediate
47	Upward folding of leaf along main vein	Strong
48	Position of widest part of leaf	Middle
49	Tip length	> 5 mm
50	Tip colour	Light green
51	Petiole length	6.8 cm
52	PL in correlation to leaf blade	Long (> 2 cm)
53	Petiole colour	All green
54	Petiole wing colour	Green with purple edge
Aerial tuber traits		
55	Absence/presence of aerial tuber	Absent
56	Tuber shape	NA
57	A tuber diameter	NA
58	Skin colour	NA
59	Surface texture	NA
60	Absence/presence of bumps	NA
61	Skin thickness	NA
62	Flesh colour	
Tuber traits		
63	Tuber Length(cm)	12.44
64	Tuber Width(cm)	25.54
65	Per Tuber Weight(kg)	0.50
66	Total Yield	0.64
67	Tuber Shape	Oval-oblong
68	Tendency of tuber branch	NIL
69	Place where tuber branch	NIL
70	Roots on the tuber surface	Many
71	Place of roots on the tuber	Upper
72	Absence /presence of blisters on tuber surface	Absence
73	Absence/presence of cracks on the tuber surface	Absence
Cooking quality traits		
74	Ease of peeling	Difficult
75	Preferred cooking method	Baked Boiled
76	Poundability of boiled tuber	Good

77	Cooking time to softness	20 min
78	Discolouration cooking water	Low
79	Appearance of tuber after cooking	Good
80	Colour of tuber after cooking	White, Not Coloured
81	Attractiveness of cooked tuber	High
82	Erosion of tuber upon cooking	No
83	Texture of cooked tuber	Smooth
84	Stickiness of cooked tuber	Sticky
85	Flavour of cooked tuber	Acceptable
86	Absence /Presence of moisture on cooked tuber	Absence
87	Bitterness of cooked tuber	Not bitter
88	Sweetness of cooked tuber	Not Sweet
89	Overall assessment of cooked tuber	High
Tuber quality traits		
90	Dry matter (%)	34.23
91	Sugar (% FW)	0.47
92	Starch (% FW)	14.67
93	Fat (% DW)	0.82
94	Fibre (%DW)	0.85
95	Protein (%)	2.19
96	Anthracoese Susceptibility	Medium



Kaniya / ADP-11

Accession name/number		Kaniya / ADP-11
Place of Collection		Car Nicobar
Year of collection		2017
Stem traits		
1	Days to emergence	41.67
2	Stem length at 20 days of emergence(cm)	45.00
3	Inter node number at 20 days	4.67
4	Stem colour at 20 days of emergence	green
5	Presence/Absence of waxiness on stem	Absent
6	Presence/absence of wings	Present
7	Wing colour	Green
8	Presence/absence of hairs	Absent
9	Presence/abs of spine	Absent
10	Presence/abs of coloured spot at spine base	Absent
11	Waxiness of plant	Absent
Growth traits		
12	Plant type	Climbing
13	Vigour	High
14	Twining habit	Yes
15	Twining direction	Anticlockwise
16	Stem height	2-10 m
17	No. of stems/plant	1.67
18	Stem colour	Brownish green
19	No. of internodes to first branching	3.67
20	No. of branches above ground	2.67
21	Stem diameter at 15 cm from base (cm)	1.73
22	Stem cross section shape	Octagonal
23	Internodal length at 1 m height (cm)	14.73
24	Absence/presence of waxiness	Absent
25	Absence/presence of wings	Present
26	Wing position	Above base
27	Wing size at 1 m height	1-2 mm
28	Wing colour	Purple
29	Presence/absence of ridges	Present
30	Scale leaf position	Opposite
Leaf traits- Tender leaves		
31	Leaf colour	Pale green
32	Leaf margin colour	Purple
33	Vein colour	Green
34	Petiole colour	All green with purple base
35	Petiole wing colour	Purple

Leaf traits- Matured leaves		
36	Position of leaves	Opposite
37	Leaf density	High
38	Leaf type	Simple
39	Leatheriness	Yes
40	Leaf colour	Dark green
41	Leaf vein colour (upper)	Green
42	Leaf vein colour (lower surface)	Green
43	Leaf margin colour	Purple
44	Leaf shape	Sagittate long
45	Leaf apex shape	Acute
46	Distance between lobes	Intermediate
47	Upward folding of leaf along main vein	Strong
48	Position of widest part of leaf	Middle
49	Tip length	> 5 mm
50	Tip colour	Light green
51	Petiole length	11.8 cm
52	PL in correlation to leaf blade	Long (> 2 cm)
53	Petiole colour	All green with purple base
54	Petiole wing colour	Purple
Aerial tuber traits		
55	Absence/presence of aerial tuber	Present
56	Tuber shape	Elongate
57	A tuber diameter	9.1 cm
58	Skin colour	Light brown
59	Surface texture	Rough
60	Absence/presence of bumps	absent
61	Skin thickness	Thin
62	Flesh colour	outer purple/inner yellow
Tuber traits		
63	Tuber Length(cm)	14.04
64	Tuber Width(cm)	28.89
65	Per Tuber Weight(kg)	0.67
66	Total Yield	0.78
67	Tuber Shape	Round
68	Tendency of tuber branch	Single branched
69	Place where tuber branch	Upper third
70	Roots on the tuber surface	Many
71	Place of roots on the tuber	Upper
72	Absence /presence of blisters on tuber surface	Presence
73	Absence/presence of cracks on the tuber surface	Presence
Cooking quality traits		
74	Ease of peeling	Easy
75	Preferred cooking method	Baked Boiled
76	Poundability of boiled tuber	Good
77	Cooking time to softness	20 min

78	Discolouration cooking water	Very High
79	Appearance of tuber after cooking	Good
80	Colour of tuber after cooking	Highly Coloured
81	Attractiveness of cooked tuber	Intermediate
82	Erosion of tuber upon cooking	No
83	Texture of cooked tuber	Fibrous
84	Stickiness of cooked tuber	Very Sticky
85	Flavour of cooked tuber	Acceptable
86	Absence /Presence of moisture on cooked tuber	Absence
87	Bitterness of cooked tuber	Not bitter
88	Sweetness of cooked tuber	Not Sweet
89	Overall assessment of cooked tuber	Intermediate
Tuber quality traits		
90	Dry matter (%)	31.08
91	Sugar (% FW)	0.52
92	Starch (% FW)	17.78
93	Fat (% DW)	1.05
94	Fibre (%DW)	0.54
95	Protein (%)	2.19
96	Anthracnose Susceptibility	Absent



Antounth / ADP-12

Accession name/number		Antounth / ADP-12
Place of Collection		Car Nicobar
Year of collection		2017
Stem traits		
1	Days to emergence	32.33
2	Stem length at 20 days of emergence(cm)	62.00
3	Inter node number at 20 days	4.67
4	Stem colour at 20 days of emergence	green
5	Presence/Absence of waxiness on stem	Present
6	Presence/absence of wings	Present
7	Wing colour	Green
8	Presence/absence of hairs	Absent
9	Presence/abs of spine	Absent
10	Presence/abs of coloured spot at spine base	Absent
11	Waxiness of plant	Medium
Growth traits		
12	Plant type	Climbing
13	Vigour	High
14	Twining habit	Yes
15	Twining direction	Anticlockwise
16	Stem height	2-10 m
17	No. of stems/plant	1
18	Stem colour	green
19	No. of internodes to first branching	3
20	No. of branches above ground	2
21	Stem diameter at 15 cm from base (cm)	1.43
22	Stem cross section shape	Quadrangle
23	Internodal length at 1 m height (cm)	12.97
24	Absence/presence of waxiness	Absent
25	Absence/presence of wings	Present
26	Wing position	Above base
27	Wing size at 1 m height	
28	Wing colour	Green
29	Presence/absence of ridges	Present
30	Scale leaf position	Opposite
Leaf traits- Tender leaves		
31	Leaf colour	Pale Green
32	Leaf margin colour	green
33	Vein colour	green
34	Petiole colour	All green with purple base
35	Petiole wing colour	green
Leaf traits- Matured leaves		
36	Position of leaves	Opposite

37	Leaf density	High
38	Leaf type	Simple
39	Leatheriness	No
40	Leaf colour	Pale
41	Leaf vein colour (upper)	Yellowish
42	Leaf vein colour (lower surface)	Green
43	Leaf margin colour	Green
44	Leaf shape	Cordate
45	Leaf apex shape	Acute
46	Distance between lobes	Intermediate
47	Upward folding of leaf along main vein	Strong
48	Position of widest part of leaf	Middle
49	Tip length	> 5
50	Tip colour	Light green
51	Petiole length	6-9 cm
52	PL in correlation to leaf blade	Long (> 2 cm)
53	Petiole colour	All green with purple base
54	Petiole wing colour	Purple
Aerial tuber traits		
55	Absence/presence of aerial tuber	Absent
56	Tuber shape	NA
57	A tuber diameter	NA
58	Skin colour	NA
59	Surface texture	NA
60	Absence/presence of bumps	NA
61	Skin thickness	NA
62	Flesh colour	
Tuber traits		
63	Tuber Length(cm)	13.49
64	Tuber Width(cm)	26.99
65	Per Tuber Weight(kg)	0.49
66	Total Yield	1.02
67	Tuber Shape	Cylindrical
68	Tendency of tuber branch	Nil
69	Place where tuber branch	Nil
70	Roots on the tuber surface	Nil
71	Place of roots on the tuber	
72	Absence /presence of blisters on tuber surface	Absence
73	Absence/presence of cracks on the tuber surface	Presence
Cooking quality traits		
74	Ease of peeling	Easy
75	Preferred cooking method	Boiled
76	Poundability of boiled tuber	Good
77	Cooking time to softness	20
78	Discolouration cooking water	Intermediate
79	Appearance of tuber after cooking	Fair

80	Colour of tuber after cooking	White, Not Coloured
81	Attractiveness of cooked tuber	
82	Erosion of tuber upon cooking	No
83	Texture of cooked tuber	Smooth
84	Stickiness of cooked tuber	Sticky
85	Flavour of cooked tuber	Very Acceptable
86	Absence /Presence of moisture on cooked tuber	Absence
87	Bitterness of cooked tuber	Not bitter
88	Sweetness of cooked tuber	Not Sweet
89	Overall assessment of cooked tuber	Low
Tuber quality traits		
90	Dry matter (%)	34
91	Sugar (% FW)	0.55
92	Starch (% FW)	13.86
93	Fat (% DW)	0.85
94	Fibre (%DW)	1.02
95	Protein (%)	2.08
96	Anthracoze Susceptibility	Medium

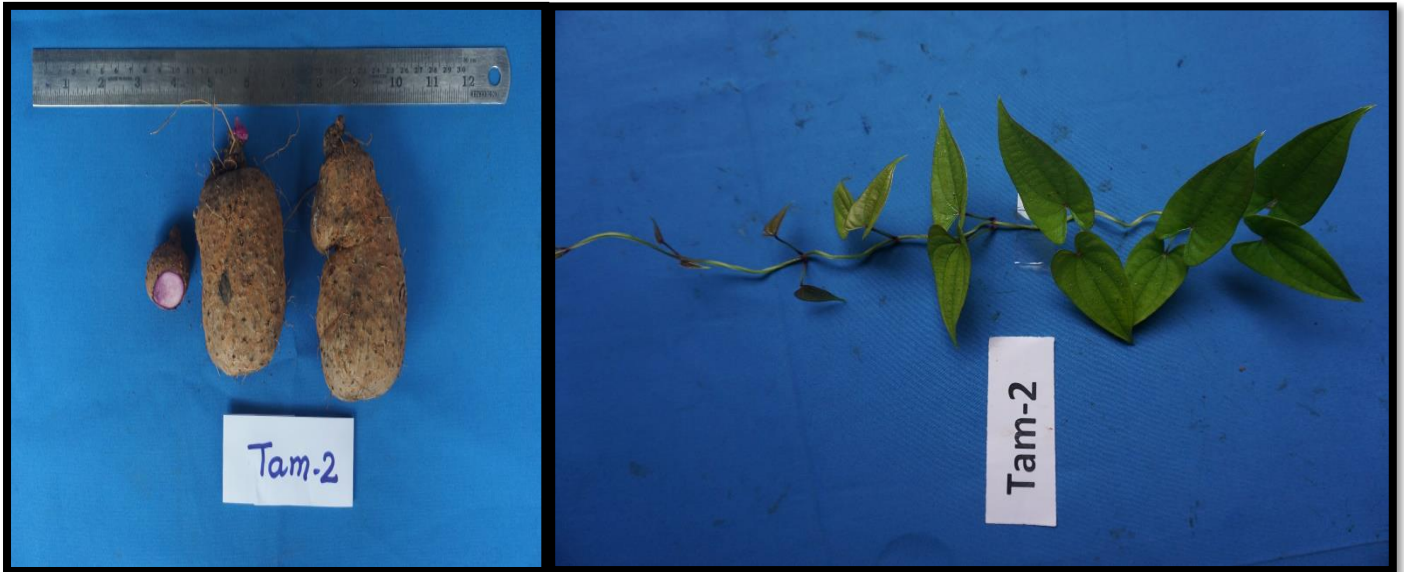


TAM-1 / ADP-01

Accession name/number		TAM-1 / ADP-01
Place of Collection		Car Nicobar
Year of collection		2015
Stem traits		
1	Days to emergence	36.33
2	Stem length at 20 days of emergence(cm)	45.00
3	Inter node number at 20 days	4.33
4	Stem colour at 20 days of emergence	Brownish green
5	Presence/Absence of waxiness on stem	Absent
6	Presence/absence of wings	Present
7	Wing colour	Green with purple edge
8	Presence/absence of hairs	Absent
9	Presence/abs of spine	Absent
10	Presence/abs of coloured spot at spine base	Absent
11	Waxiness of plant	Medium
Growth traits		
12	Plant type	Climbing
13	Vigour	Low
14	Twining habit	Yes
15	Twining direction	Anticlockwise
16	Stem height	2-10 m
17	No. of stems/plant	2.00
18	Stem colour	Green
19	No. of internodes to first branching	1.00
20	No. of branches above ground	1.67
21	Stem diameter at 15 cm from base (cm)	1.73
22	Stem cross section shape	Quadrangular
23	Internodal length at 1 m height (cm)	8.13
24	Absence/presence of waxiness	Absent
25	Absence/presence of wings	Present
26	Wing position	Above base
27	Wing size at 1 m height	>2 mm
28	Wing colour	Green with purple edge
29	Presence/absence of ridges	Present
30	Scale leaf position	Alternate
Leaf traits- Tender leaves		
31	Leaf colour	Purplish green
32	Leaf margin colour	Purple
33	Vein colour	Green
34	Petiole colour	All green with purple base
35	Petiole wing colour	Green with purple edges
Leaf traits- Matured leaves		
36	Position of leaves	Alternate

37	Leaf density	Low
38	Leaf type	Simple
39	Leatheriness	No
40	Leaf colour	Yellowish
41	Leaf vein colour (upper)	Yellowish
42	Leaf vein colour (lower surface)	Yellowish
43	Leaf margin colour	Green
44	Leaf shape	Sagittate long
45	Leaf apex shape	Acute
46	Distance between lobes	Intermediate
47	Upward folding of leaf along main vein	Strong
48	Position of widest part of leaf	Middle
49	Tip length	> 5 mm
50	Tip colour	Light green
51	Petiole length	6-9 cm
52	PL in correlation to leaf blade	Short (< 2 cm)
53	Petiole colour	All green with purple base
54	Petiole wing colour	Green with purple edge
Aerial tuber traits		
55	Absence/presence of aerial tuber	Absent
56	Tuber shape	NA
57	A tuber diameter	NA
58	Skin colour	NA
59	Surface texture	NA
60	Absence/presence of bumps	NA
61	Skin thickness	NA
62	Flesh colour	NA
Tuber traits		
63	Tuber Length(cm)	14.59
64	Tuber Width(cm)	22.73
65	Per Tuber Weight(kg)	0.60
66	Total Yield	2.24
67	Tuber Shape	Oval-oblong
68	Tendency of tuber branch	Nil
69	Place where tuber branch	Upper Third
70	Roots on the tuber surface	Few
71	Place of roots on the tuber	Upper
72	Absence /presence of blisters on tuber surface	Absence
73	Absence/presence of cracks on the tuber surface	Absence
Cooking quality traits		
74	Ease of peeling	Easy
75	Preferred cooking method	Baked and boiled
76	Poundability of boiled tuber	Good
77	Cooking time to softness	20 min
78	Discolouration cooking water	Very High
79	Appearance of tuber after cooking	Good

80	Colour of tuber after cooking	Highly Coloured
81	Attractiveness of cooked tuber	High
82	Erosion of tuber upon cooking	No
83	Texture of cooked tuber	Smooth
84	Stickiness of cooked tuber	Very Sticky
85	Flavour of cooked tuber	Very Acceptable
86	Absence /Presence of moisture on cooked tuber	Absence
87	Bitterness of cooked tuber	Not bitter
88	Sweetness of cooked tuber	Not Sweet
89	Overall assessment of cooked tuber	High
Tuber quality traits		
90	Dry matter (%)	32.25
91	Sugar (% FW)	0.57
92	Starch (% FW)	16.07
93	Fat (% DW)	1.00
94	Fibre (%DW)	0.38
95	Protein (%)	2.63
96	Anthracnose Susceptibility	Medium

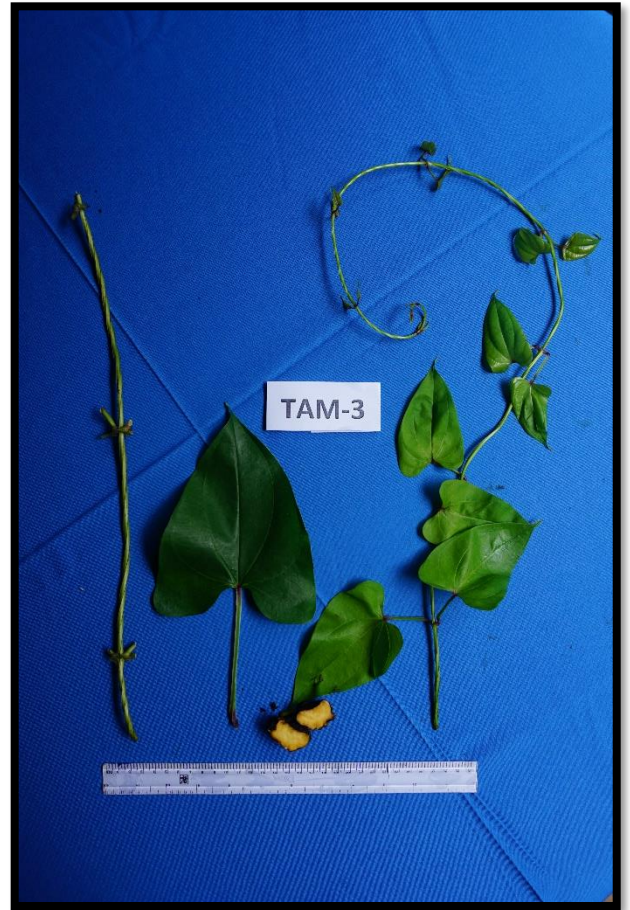


TAM-2 / ADP-02

Accession name/number		TAM-2 / ADP-02
Place of Collection		Car Nicobar
Year of collection		2015
Stem traits		
1	Days to emergence	40.00
2	Stem length at 20 days of emergence(cm)	60.00
3	Inter node number at 20 days	5.67
4	Stem colour at 20 days of emergence	Green
5	Presence/Absence of waxiness on stem	Absent
6	Presence/absence of wings	Present
7	Wing colour	Green
8	Presence/absence of hairs	Absent
9	Presence/abs of spine	Absent
10	Presence/abs of coloured spot at spine base	Absent
11	Waxiness of plant	Low
Growth traits		
12	Plant type	Climbing
13	Vigour	Low
14	Twining habit	Yes
15	Twining direction	Anticlockwise
16	Stem height	2-10 m
17	No. of stems/plant	1.67
18	Stem colour	Green
19	No. of internodes to first branching	1.33
20	No. of branches above ground	2.67
21	Stem diameter at 15 cm from base (cm)	1.60
22	Stem cross section shape	Quadrangular
23	Internodal length at 1 m height (cm)	11.97
24	Absence/presence of waxiness	Absent
25	Absence/presence of wings	Present
26	Wing position	at the base
27	Wing size at 1 m height	1-2 mm
28	Wing colour	Green
29	Presence/absence of ridges	Present
30	Scale leaf position	Alternate
Leaf traits- Tender leaves		
31	Leaf colour	Yellowish
32	Leaf margin colour	Purple
33	Vein colour	Green
34	Petiole colour	All green with purple base
35	Petiole wing colour	Purple

Leaf traits- Matured leaves		
36	Position of leaves	Alternate
37	Leaf density	Low
38	Leaf type	Simple
39	Leatheriness	No
40	Leaf colour	Yellowish
41	Leaf vein colour (upper)	Yellowish
42	Leaf vein colour (lower surface)	Green
43	Leaf margin colour	Green
44	Leaf shape	Sagittate long
45	Leaf apex shape	Acute
46	Distance between lobes	Intermediate
47	Upward folding of leaf along main vein	Strong
48	Position of widest part of leaf	Middle
49	Tip length	> 5 mm
50	Tip colour	Light green
51	Petiole length	9.5 cm
52	PL in correlation to leaf blade	Long (> 2 cm)
53	Petiole colour	All green with purple base
54	Petiole wing colour	Purple
Aerial tuber traits		
55	Absence/presence of aerial tuber	Absent
56	Tuber shape	NA
57	A tuber diameter	NA
58	Skin colour	NA
59	Surface texture	NA
60	Absence/presence of bumps	NA
61	Skin thickness	NA
62	Flesh colour	
Tuber traits		
63	Tuber Length(cm)	5.50
64	Tuber Width(cm)	15.83
65	Per Tuber Weight(kg)	0.07
66	Total Yield	0.48
67	Tuber Shape	Round
68	Tendency of tuber branch	NIL
69	Place where tuber branch	NIL
70	Roots on the tuber surface	Few
71	Place of roots on the tuber	Upper
72	Absence /presence of blisters on tuber surface	Absence
73	Absence/presence of cracks on the tuber surface	Absence
Cooking quality traits		
74	Ease of peeling	Difficult
75	Preferred cooking method	Boiled
76	Poundability of boiled tuber	Poor
77	Cooking time to softness	30 min

78	Discolouration cooking water	Low
79	Appearance of tuber after cooking	Good
80	Colour of tuber after cooking	White, Not Coloured
81	Attractiveness of cooked tuber	Intermediate
82	Erosion of tuber upon cooking	No
83	Texture of cooked tuber	Smooth
84	Stickiness of cooked tuber	Sticky
85	Flavour of cooked tuber	Acceptable
86	Absence /Presence of moisture on cooked tuber	Absence
87	Bitterness of cooked tuber	Not bitter
88	Sweetness of cooked tuber	Not Sweet
89	Overall assessment of cooked tuber	Intermediate
Tuber quality traits		
90	Dry matter (%)	28.96
91	Sugar (% FW)	0.42
92	Starch (% FW)	14.17
93	Fat (% DW)	0.85
94	Fibre (%DW)	1.06
95	Protein (%)	1.75
96	Anthracnose Susceptibility	Low



TAM-3 (IC-0623826)

Accession name/number		TAM-3 (IC-0623826)
Place of Collection		Tamaloo, Car Nicobar
Year of collection		2015
Stem traits		
1	Days to emergence	36.33
2	Stem length at 20 days of emergence(cm)	43.33
3	Inter node number at 20 days	4.00
4	Stem colour at 20 days of emergence	Green
5	Presence/Absence of waxiness on stem	Absent
6	Presence/absence of wings	Present
7	Wing colour	Green
8	Presence/absence of hairs	Absent
9	Presence/abs of spine	Absent
10	Presence/abs of coloured spot at spine base	Absent
11	Waxiness of plant	Absent
Growth traits		
12	Plant type	Climbing
13	Vigour	Low
14	Twining habit	Yes
15	Twining direction	Anticlockwise
16	Stem height	>10m
17	No. of stems/plant	2.00
18	Stem colour	Green
19	No. of internodes to first branching	1.00
20	No. of branches above ground	2.67
21	Stem diameter at 15 cm from base (cm)	1.67
22	Stem cross section shape	Quadrangular
23	Internodal length at 1 m height (cm)	7.30
24	Absence/presence of waxiness	Absent
25	Absence/presence of wings	Present
26	Wing position	Above base
27	Wing size at 1 m height	1-2 mm
28	Wing colour	Green
29	Presence/absence of ridges	Present
30	Scale leaf position	Opposite
Leaf traits- Tender leaves		
31	Leaf colour	Yellowish
32	Leaf margin colour	Purple
33	Vein colour	Green
34	Petiole colour	All green with purple base
35	Petiole wing colour	Purple
Leaf traits- Matured leaves		

36	Position of leaves	Opposite
37	Leaf density	High
38	Leaf type	Simple
39	Leatheriness	No
40	Leaf colour	Dark green
41	Leaf vein colour (upper)	Green
42	Leaf vein colour (lower surface)	Green
43	Leaf margin colour	Purple
44	Leaf shape	Cordate
45	Leaf apex shape	Acute
46	Distance between lobes	Intermediate
47	Upward folding of leaf along main vein	Strong
48	Position of widest part of leaf	Middle
49	Tip length	2-5 mm
50	Tip colour	Light green
51	Petiole length	6-9 cm
52	PL in correlation to leaf blade	Short (< 2 cm)
53	Petiole colour	Green
54	Petiole wing colour	Green
Aerial tuber traits		
55	Absence/presence of aerial tuber	Absent
56	Tuber shape	NA
57	A tuber diameter	NA
58	Skin colour	NA
59	Surface texture	NA
60	Absence/presence of bumps	NA
61	Skin thickness	NA
62	Flesh colour	NA
Tuber traits		
63	Tuber Length(cm)	6.36
64	Tuber Width(cm)	23.86
65	Per Tuber Weight(kg)	0.39
66	Total Yield	0.42
67	Tuber Shape	Round
68	Tendency of tuber branch	Branched
69	Place where tuber branch	Upper third
70	Roots on the tuber surface	NIL
71	Place of roots on the tuber	NIL
72	Absence /presence of blisters on tuber surface	Absence
73	Absence/presence of cracks on the tuber surface	Presence
Cooking quality traits		
74	Ease of peeling	Difficult
75	Preferred cooking method	Baked or boiled
76	Poundability of boiled tuber	Poor
77	Cooking time to softness	35 min
78	Discolouration cooking water	Very Low

79	Appearance of tuber after cooking	Good
80	Colour of tuber after cooking	White, Not Coloured
81	Attractiveness of cooked tuber	Low
82	Erosion of tuber upon cooking	No
83	Texture of cooked tuber	Fibrous
84	Stickiness of cooked tuber	Very Sticky
85	Flavour of cooked tuber	Acceptable
86	Absence /Presence of moisture on cooked tuber	Absence
87	Bitterness of cooked tuber	Not bitter
88	Sweetness of cooked tuber	Not Sweet
89	Overall assessment of cooked tuber	Low
Tuber quality traits		
90	Dry matter (%)	29.20
91	Sugar (% FW)	0.32
92	Starch (% FW)	10.80
93	Fat (% DW)	1.95
94	Fibre (%DW)	1.52
95	Protein (%)	3.06
96	Anthracoze Susceptibility	Absent



Nic-DA-1 (IC-592097)

Accession name/number		Nic-DA-1 / Nic-GY-1 (IC-592097)
Place of Collection		Car Nicobar
Year of collection		2010
Stem traits		
1	Days to emergence	33.67
2	Stem length at 20 days of emergence(cm)	50.33
3	Inter node number at 20 days	4.33
4	Stem colour at 20 days of emergence	Green
5	Presence/Absence of waxiness on stem	Absent
6	Presence/absence of wings	Present
7	Wing colour	Green
8	Presence/absence of hairs	Absent
9	Presence/abs of spine	Absent
10	Presence/abs of coloured spot at spine base	Absent
11	Waxiness of plant	Medium
Growth traits		
12	Plant type	Climbing
13	Vigour	High
14	Twining habit	Yes
15	Twining direction	Anticlockwise
16	Stem height	>10m
17	No. of stems/plant	2.00
18	Stem colour	Green
19	No. of internodes to first branching	2.33
20	No. of branches above ground	3.00
21	Stem diameter at 15 cm from base (cm)	1.93
22	Stem cross section shape	Quadrangular
23	Internodal length at 1 m height (cm)	10.20
24	Absence/presence of waxiness	Absent
25	Absence/presence of wings	Present
26	Wing position	Above base
27	Wing size at 1 m height	1-2 mm
28	Wing colour	Green
29	Presence/absence of ridges	Present
30	Scale leaf position	Opposite
Leaf traits- Tender leaves		
31	Leaf colour	Yellowish
32	Leaf margin colour	Purple
33	Vein colour	Green
34	Petiole colour	All green with purple base
35	Petiole wing colour	Purple
Leaf traits- Matured leaves		
36	Position of leaves	Opposite

37	Leaf density	High
38	Leaf type	Simple
39	Leatheriness	No
40	Leaf colour	Pale green
41	Leaf vein colour (upper)	Yellowish
42	Leaf vein colour (lower surface)	Yellowish
43	Leaf margin colour	Green
44	Leaf shape	Cordate
45	Leaf apex shape	Acute
46	Distance between lobes	Intermediate
47	Upward folding of leaf along main vein	Strong
48	Position of widest part of leaf	Middle
49	Tip length	> 5 mm
50	Tip colour	Light green
51	Petiole length	6-9 cm
52	PL in correlation to leaf blade	Long (> 2 cm)
53	Petiole colour	All green with purple base
54	Petiole wing colour	Green
Aerial tuber traits		
55	Absence/presence of aerial tuber	Absent
56	Tuber shape	NA
57	A tuber diameter	NA
58	Skin colour	NA
59	Surface texture	NA
60	Absence/presence of bumps	NA
61	Skin thickness	NA
62	Flesh colour	NA
Tuber traits		
63	Tuber Length(cm)	16.27
64	Tuber Width(cm)	29.59
65	Per Tuber Weight(kg)	0.84
66	Total Yield	0.99
67	Tuber Shape	Cylindrical
68	Tendency of tuber branch	NIL
69	Place where tuber branch	NIL
70	Roots on the tuber surface	Few
71	Place of roots on the tuber	Entire Tuber
72	Absence /presence of blisters on tuber surface	Absence
73	Absence/presence of cracks on the tuber surface	Presence
Cooking quality traits		
74	Ease of peeling	Easy
75	Preferred cooking method	Baked and boiled
76	Poundability of boiled tuber	Good
77	Cooking time to softness	20 min
78	Discolouration cooking water	Very Low
79	Appearance of tuber after cooking	Fair

80	Colour of tuber after cooking	White, Not Coloured
81	Attractiveness of cooked tuber	Intermediate
82	Erosion of tuber upon cooking	No
83	Texture of cooked tuber	Grainy
84	Stickiness of cooked tuber	Very Sticky
85	Flavour of cooked tuber	Acceptable
86	Absence /Presence of moisture on cooked tuber	Absence
87	Bitterness of cooked tuber	Not bitter
88	Sweetness of cooked tuber	Not Sweet
89	Overall assessment of cooked tuber	Intermediate
Tuber quality traits		
90	Dry matter (%)	31.04
91	Sugar (% FW)	0.40
92	Starch (% FW)	15.24
93	Fat (% DW)	1.35
94	Fibre (%DW)	0.64
95	Protein (%)	2.63
96	Anthracnose Susceptibility	Medium

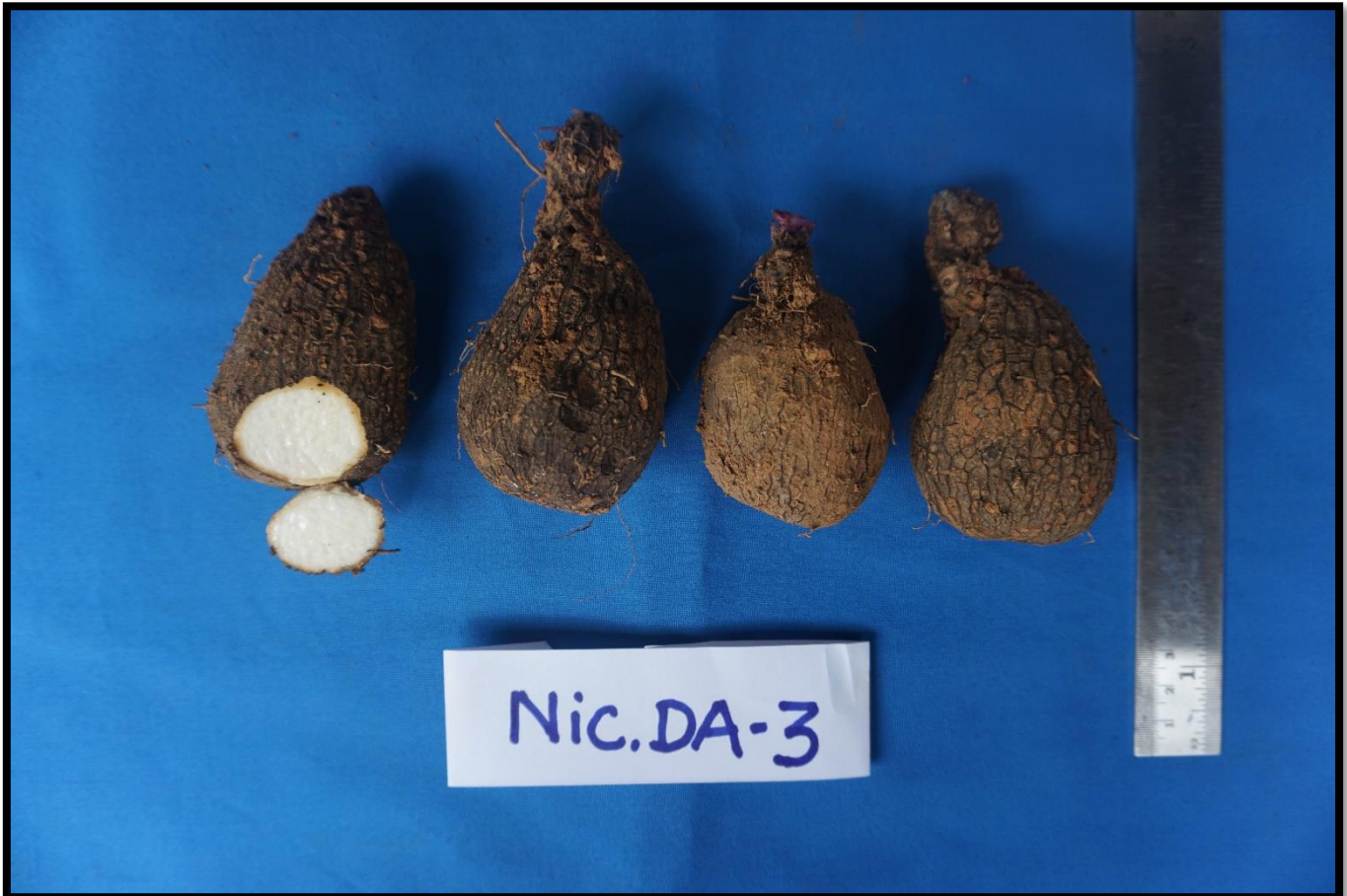


Nic-DA-2 / ADP-03

Accession name/number		Nic-DA-2 / ADP-03
Place of Collection		Car Nicobar
Year of collection		2016
Stem traits		
1	Days to emergence	48.00
2	Stem length at 20 days of emergence(cm)	55.00
3	Inter node number at 20 days	4.33
4	Stem colour at 20 days of emergence	Purplish Green
5	Presence/Absence of waxiness on stem	Absent
6	Presence/absence of wings	Present
7	Wing colour	Purplish Green
8	Presence/absence of hairs	Absent
9	Presence/abs of spine	Absent
10	Presence/abs of coloured spot at spine base	Absent
11	Waxiness of plant	Low
Growth traits		
12	Plant type	Climbing
13	Vigour	Low
14	Twining habit	Yes
15	Twining direction	Anticlockwise
16	Stem height	2-10 m
17	No. of stems/plant	1.67
18	Stem colour	Green
19	No. of internodes to first branching	1.33
20	No. of branches above ground	2.67
21	Stem diameter at 15 cm from base (cm)	1.70
22	Stem cross section shape	Quadrangular
23	Internodal length at 1 m height (cm)	13.20
24	Absence/presence of waxiness	Absent
25	Absence/presence of wings	Present
26	Wing position	at the base
27	Wing size at 1 m height	1-2 mm
28	Wing colour	Purple
29	Presence/absence of ridges	Present
30	Scale leaf position	Opposite
Leaf traits- Tender leaves		
31	Leaf colour	Pale green
32	Leaf margin colour	Purple
33	Vein colour	Green
34	Petiole colour	All green with purple base
35	Petiole wing colour	Purple
Leaf traits- Matured leaves		
36	Position of leaves	Alternate
37	Leaf density	Low

38	Leaf type	Simple
39	Leatheriness	No
40	Leaf colour	Yellowish
41	Leaf vein colour (upper)	Green
42	Leaf vein colour (lower surface)	Green
43	Leaf margin colour	Green
44	Leaf shape	Sagittate long
45	Leaf apex shape	Acute
46	Distance between lobes	Intermediate
47	Upward folding of leaf along main vein	Strong
48	Position of widest part of leaf	Middle
49	Tip length	> 5 mm
50	Tip colour	Light green
51	Petiole length	10.8cm
52	PL in correlation to leaf blade	Long (> 2 cm)
53	Petiole colour	All green with purple base
54	Petiole wing colour	Purple
Aerial tuber traits		
55	Absence/presence of aerial tuber	Present
56	Tuber shape	Irregular
57	A tuber diameter	> 10 cm
58	Skin colour	Dark brown
59	Surface texture	Rough
60	Absence/presence of bumps	absent
61	Skin thickness	Thin
62	Flesh colour	Yellowish white
Tuber traits		
63	Tuber Length(cm)	7.15
64	Tuber Width(cm)	23.15
65	Per Tuber Weight(kg)	0.19
66	Total Yield	0.78
67	Tuber Shape	Round
68	Tendency of tuber branch	NIL
69	Place where tuber branch	NIL
70	Roots on the tuber surface	Few
71	Place of roots on the tuber	Upper
72	Absence /presence of blisters on tuber surface	Absence
73	Absence/presence of cracks on the tuber surface	Absence
Cooking quality traits		
74	Ease of peeling	Difficult
75	Preferred cooking method	Baked Boiled
76	Poundability of boiled tuber	Good
77	Cooking time to softness	15 min
78	Discolouration cooking water	Low
79	Appearance of tuber after cooking	Good
80	Colour of tuber after cooking	White, Not Coloured

81	Attractiveness of cooked tuber	High
82	Erosion of tuber upon cooking	No
83	Texture of cooked tuber	Smooth
84	Stickiness of cooked tuber	Sticky
85	Flavour of cooked tuber	Acceptable
86	Absence /Presence of moisture on cooked tuber	Absence
87	Bitterness of cooked tuber	Not bitter
88	Sweetness of cooked tuber	Not Sweet
89	Overall assessment of cooked tuber	Intermediate
Tuber quality traits		
90	Dry matter (%)	32.00
91	Sugar (% FW)	0.48
92	Starch (% FW)	15.41
93	Fat (% DW)	1.67
94	Fibre (%DW)	0.92
95	Protein (%)	2.08
96	Anthracoese Susceptibility	Low

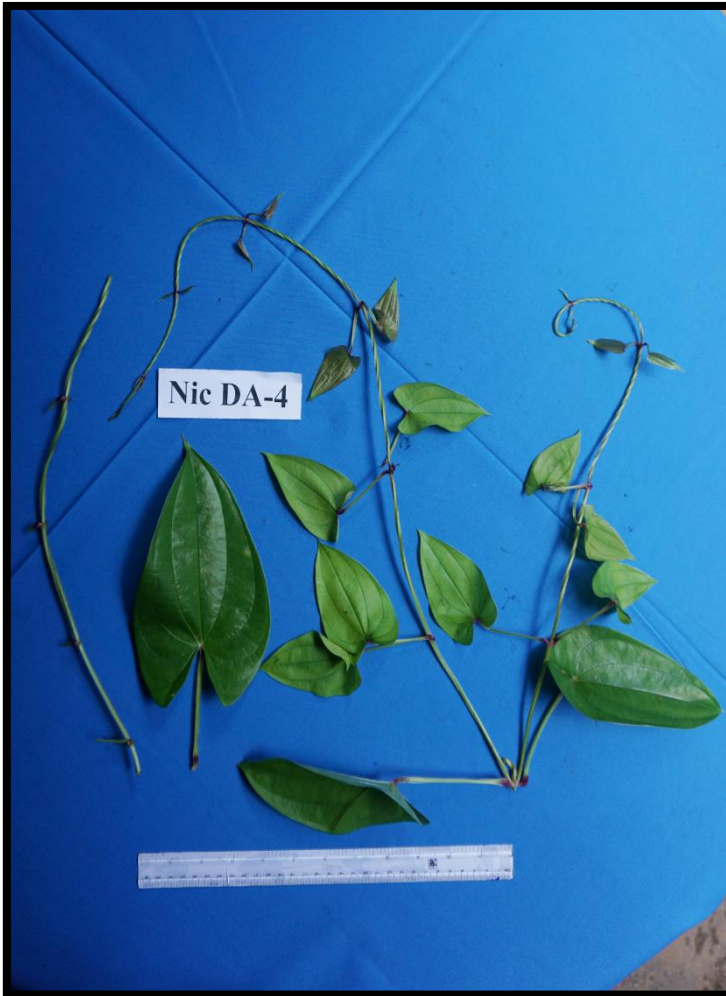


Nic-DA-3 / ADP-04

Accession name/number		Nic-DA-3 / ADP-04
Place of Collection		Car Nicobar
Year of collection		2016
Stem traits		
1	Days to emergence	35.00
2	Stem length at 20 days of emergence(cm)	40.00
3	Inter node number at 20 days	4.00
4	Stem colour at 20 days of emergence	Green
5	Presence/Absence of waxiness on stem	Absent
6	Presence/absence of wings	Present
7	Wing colour	Green
8	Presence/absence of hairs	Absent
9	Presence/abs of spine	Absent
10	Presence/abs of coloured spot at spine base	Absent
11	Waxiness of plant	Low
Growth traits		
12	Plant type	Climbing
13	Vigour	Low
14	Twining habit	Yes
15	Twining direction	Anticlockwise
16	Stem height	2-10 m
17	No. of stems/plant	1.33
18	Stem colour	Green
19	No. of internodes to first branching	2.00
20	No. of branches above ground	2.67
21	Stem diameter at 15 cm from base (cm)	1.93
22	Stem cross section shape	Quadrangular
23	Internodal length at 1 m height (cm)	14.57
24	Absence/presence of waxiness	Absent
25	Absence/presence of wings	Present
26	Wing position	at the base
27	Wing size at 1 m height	1-2 mm
28	Wing colour	Purple
29	Presence/absence of ridges	Present
30	Scale leaf position	Opposite
Leaf traits- Tender leaves		
31	Leaf colour	Pale green
32	Leaf margin colour	Purple
33	Vein colour	Yellowish
34	Petiole colour	Green
35	Petiole wing colour	Purple
Leaf traits- Matured leaves		

36	Position of leaves	Opposite
37	Leaf density	Low
38	Leaf type	Simple
39	Leatheriness	No
40	Leaf colour	Pale green
41	Leaf vein colour (upper)	Green
42	Leaf vein colour (lower surface)	Green
43	Leaf margin colour	Green
44	Leaf shape	Sagittate long
45	Leaf apex shape	Acute
46	Distance between lobes	Intermediate
47	Upward folding of leaf along main vein	Strong
48	Position of widest part of leaf	Middle
49	Tip length	> 5 mm
50	Tip colour	Light green
51	Petiole length	>_ 10 cm
52	PL in correlation to leaf blade	Long (> 2 cm)
53	Petiole colour	All green
54	Petiole wing colour	Purple
Aerial tuber traits		
55	Absence/presence of aerial tuber	Present
56	Tuber shape	Elongate
57	A tuber diameter	8 cm
58	Skin colour	Light brown
59	Surface texture	Rough
60	Absence/presence of bumps	absent
61	Skin thickness	Thin
62	Flesh colour	
Tuber traits		
63	Tuber Length(cm)	10.17
64	Tuber Width(cm)	18.10
65	Per Tuber Weight(kg)	0.14
66	Total Yield	1.05
67	Tuber Shape	Round
68	Tendency of tuber branch	Nil
69	Place where tuber branch	Nil
70	Roots on the tuber surface	Few
71	Place of roots on the tuber	Upper third
72	Absence /presence of blisters on tuber surface	Absence
73	Absence/presence of cracks on the tuber surface	Absence
Cooking quality traits		
74	Ease of peeling	Difficult
75	Preferred cooking method	Baked Boiled
76	Poundability of boiled tuber	Good
77	Cooking time to softness	20 min
78	Discolouration cooking water	Low

79	Appearance of tuber after cooking	Good
80	Colour of tuber after cooking	White, Not Coloured
81	Attractiveness of cooked tuber	High
82	Erosion of tuber upon cooking	No
83	Texture of cooked tuber	Smooth
84	Stickiness of cooked tuber	Sticky
85	Flavour of cooked tuber	Very Acceptable
86	Absence /Presence of moisture on cooked tuber	Absence
87	Bitterness of cooked tuber	Not bitter
88	Sweetness of cooked tuber	Not Sweet
89	Overall assessment of cooked tuber	High
Tuber quality traits		
90	Dry matter (%)	33.45
91	Sugar (% FW)	0.37
92	Starch (% FW)	12.52
93	Fat (% DW)	0.75
94	Fibre (%DW)	1.02
95	Protein (%)	2.19
96	Anthracoze Susceptibility	Low



Nic-DA-4 / ADP-05

Accession name/number		Nic-DA-4 /ADP-05
Place of Collection		Car Nicobar
Year of collection		2016
Stem traits		
1	Days to emergence	34.67
2	Stem length at 20 days of emergence(cm)	48.33
3	Inter node number at 20 days	4.33
4	Stem colour at 20 days of emergence	Brownish green
5	Presence/Absence of waxiness on stem	Absent
6	Presence/absence of wings	Present
7	Wing colour	Green
8	Presence/absence of hairs	Absent
9	Presence/abs of spine	Absent
10	Presence/abs of coloured spot at spine base	Absent
11	Waxiness of plant	Medium
Growth traits		
12	Plant type	Climbing
13	Vigour	High
14	Twining habit	Yes
15	Twining direction	Anticlockwise
16	Stem height	>10m
17	No. of stems/plant	1.00
18	Stem colour	Purplish green
19	No. of internodes to first branching	3.67
20	No. of branches above ground	2.67
21	Stem diameter at 15 cm from base (cm)	2.40
22	Stem cross section shape	Quadrangular
23	Internodal length at 1 m height (cm)	14.53
24	Absence/presence of waxiness	Absent
25	Absence/presence of wings	Present
26	Wing position	Above base
27	Wing size at 1 m height	1-2 mm
28	Wing colour	Purple
29	Presence/absence of ridges	Present
30	Scale leaf position	Opposite
Leaf traits- Tender leaves		
31	Leaf colour	Purplish green
32	Leaf margin colour	Purple
33	Vein colour	Purple
34	Petiole colour	All green with purple base
35	Petiole wing colour	Purple
Leaf traits- Matured leaves		

36	Position of leaves	Opposite
37	Leaf density	High
38	Leaf type	Simple
39	Leatheriness	No
40	Leaf colour	Dark green
41	Leaf vein colour (upper)	Green
42	Leaf vein colour (lower surface)	Green
43	Leaf margin colour	Green
44	Leaf shape	Sagittate long
45	Leaf apex shape	Acute
46	Distance between lobes	Intermediate
47	Upward folding of leaf along main vein	Strong
48	Position of widest part of leaf	Middle
49	Tip length	> 5 mm
50	Tip colour	Light green
51	Petiole length	> 10 cm
52	PL in correlation to leaf blade	Long (> 2 cm)
53	Petiole colour	All green with purple base
54	Petiole wing colour	Purple
Aerial tuber traits		
55	Absence/presence of aerial tuber	Absent
56	Tuber shape	NA
57	A tuber diameter	NA
58	Skin colour	NA
59	Surface texture	NA
60	Absence/presence of bumps	NA
61	Skin thickness	NA
62	Flesh colour	NA
Tuber traits		
63	Tuber Length(cm)	17.08
64	Tuber Width(cm)	37.29
65	Per Tuber Weight(kg)	1.12
66	Total Yield	1.41
67	Tuber Shape	Irregular
68	Tendency of tuber branch	Single branched
69	Place where tuber branch	Middle
70	Roots on the tuber surface	Few
71	Place of roots on the tuber	Entire Tuber
72	Absence /presence of blisters on tuber surface	Presence
73	Absence/presence of cracks on the tuber surface	Absence
Cooking quality traits		
74	Ease of peeling	Easy
75	Preferred cooking method	Baked or boiled
76	Poundability of boiled tuber	Good
77	Cooking time to softness	25 min
78	Discolouration cooking water	Intermediate

79	Appearance of tuber after cooking	Fair
80	Colour of tuber after cooking	White, Not Coloured
81	Attractiveness of cooked tuber	Intermediate
82	Erosion of tuber upon cooking	No
83	Texture of cooked tuber	Grainy
84	Stickiness of cooked tuber	Very Sticky
85	Flavour of cooked tuber	Acceptable
86	Absence /Presence of moisture on cooked tuber	Absence
87	Bitterness of cooked tuber	Not bitter
88	Sweetness of cooked tuber	Not Sweet
89	Overall assessment of cooked tuber	Intermediate
Tuber quality traits		
90	Dry matter (%)	35.51
91	Sugar (% FW)	0.42
92	Starch (% FW)	13.03
93	Fat (% DW)	1.85
94	Fibre (%DW)	0.86
95	Protein (%)	2.63
96	Anthracoze Susceptibility	Medium



Nic-DA-5 / ADP-06

Accession name/number		Nic-DA-5 / ADP-06
Place of Collection		Car Nicobar
Year of collection		2016
Stem traits		
1	Days to emergence	37.67
2	Stem length at 20 days of emergence(cm)	36.67
3	Inter node number at 20 days	3.00
4	Stem colour at 20 days of emergence	Green
5	Presence/Absence of waxiness on stem	Absent
6	Presence/absence of wings	Present
7	Wing colour	Green
8	Presence/absence of hairs	Absent
9	Presence/abs of spine	Absent
10	Presence/abs of coloured spot at spine base	Absent
11	Waxiness of plant	Medium
Growth traits		
12	Plant type	Climbing
13	Vigour	High
14	Twining habit	Yes
15	Twining direction	Anticlockwise
16	Stem height	>10m
17	No. of stems/plant	1.00
18	Stem colour	Green
19	No. of internodes to first branching	7.00
20	No. of branches above ground	1.00
21	Stem diameter at 15 cm from base (cm)	1.80
22	Stem cross section shape	Quadrangular
23	Internodal length at 1 m height (cm)	11.33
24	Absence/presence of waxiness	Absent
25	Absence/presence of wings	Present
26	Wing position	Above base
27	Wing size at 1 m height	1-2 mm
28	Wing colour	Green
29	Presence/absence of ridges	Present
30	Scale leaf position	Both
Leaf traits- Tender leaves		
31	Leaf colour	Yellowish
32	Leaf margin colour	Green
33	Vein colour	Green
34	Petiole colour	All green with purple base
35	Petiole wing colour	Green
Leaf traits- Matured leaves		

36	Position of leaves	Opposite
37	Leaf density	High
38	Leaf type	Simple
39	Leatheriness	No
40	Leaf colour	Dark green
41	Leaf vein colour (upper)	Green
42	Leaf vein colour (lower surface)	Green
43	Leaf margin colour	Green
44	Leaf shape	Sagittate long
45	Leaf apex shape	Acute
46	Distance between lobes	Intermediate
47	Upward folding of leaf along main vein	Strong
48	Position of widest part of leaf	Middle
49	Tip length	> 5 mm
50	Tip colour	Light green
51	Petiole length	6-9 cm
52	PL in correlation to leaf blade	Long (> 2 cm)
53	Petiole colour	All green with purple base
54	Petiole wing colour	Green
Aerial tuber traits		
55	Absence/presence of aerial tuber	Absent
56	Tuber shape	NA
57	A tuber diameter	NA
58	Skin colour	NA
59	Surface texture	NA
60	Absence/presence of bumps	NA
61	Skin thickness	NA
62	Flesh colour	NA
Tuber traits		
63	Tuber Length(cm)	16.70
64	Tuber Width(cm)	32.08
65	Per Tuber Weight(kg)	0.87
66	Total Yield	1.08
67	Tuber Shape	Round
68	Tendency of tuber branch	NIL
69	Place where tuber branch	Upper third
70	Roots on the tuber surface	Few
71	Place of roots on the tuber	Entire Tuber
72	Absence /presence of blisters on tuber surface	Absence
73	Absence/presence of cracks on the tuber surface	Presence
Cooking quality traits		
74	Ease of peeling	Easy
75	Preferred cooking method	Baked or boiled
76	Poundability of boiled tuber	Good
77	Cooking time to softness	15 min
78	Discolouration cooking water	Intermediate

79	Appearance of tuber after cooking	Good
80	Colour of tuber after cooking	Highly Coloured
81	Attractiveness of cooked tuber	High
82	Erosion of tuber upon cooking	No
83	Texture of cooked tuber	Smooth
84	Stickiness of cooked tuber	Sticky
85	Flavour of cooked tuber	Very Acceptable
86	Absence /Presence of moisture on cooked tuber	Absence
87	Bitterness of cooked tuber	Not bitter
88	Sweetness of cooked tuber	Not Sweet
89	Overall assessment of cooked tuber	High
Tuber quality traits		
90	Dry matter (%)	27.92
91	Sugar (% FW)	0.30
92	Starch (% FW)	10.74
93	Fat (% DW)	1.95
94	Fibre (%DW)	0.76
95	Protein (%)	2.63
96	Anthraco nose Susceptibility	Medium

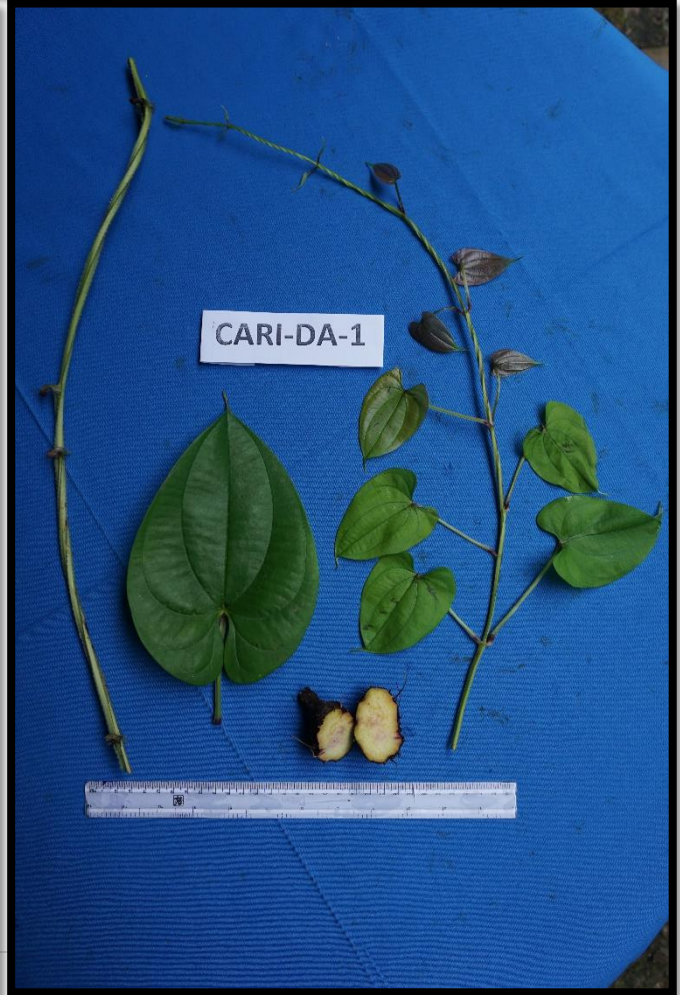
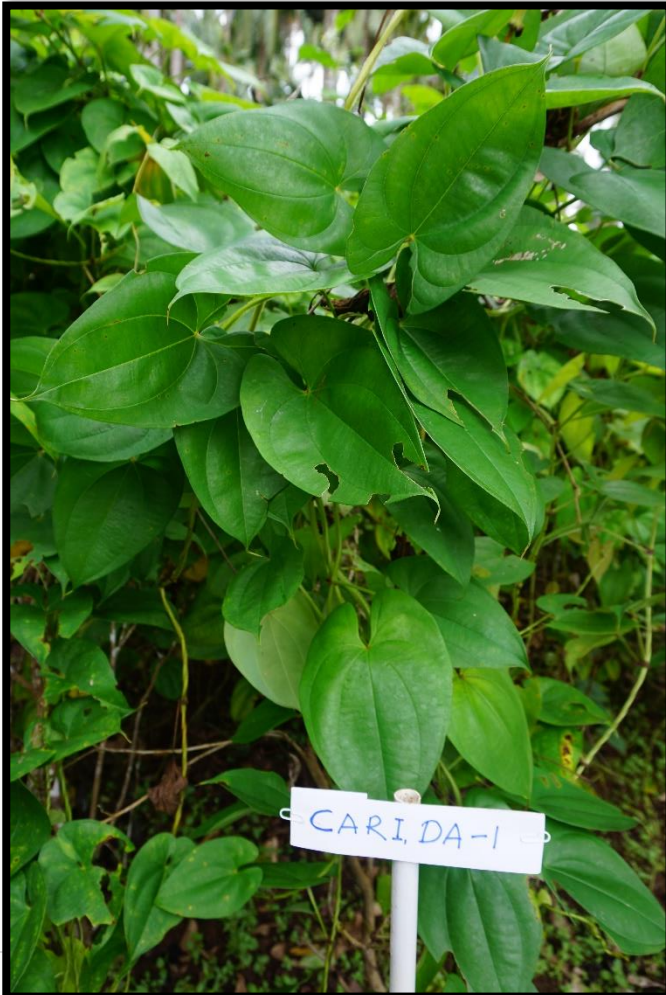


Nic-DA-6 / ADP-07

Accession name/number		Nic-DA-6 / ADP-07
Place of Collection		Car Nicobar
Year of collection		2016
Stem traits		
1	Days to emergence	39.67
2	Stem length at 20 days of emergence(cm)	45.33
3	Inter node number at 20 days	4.33
4	Stem colour at 20 days of emergence	Purplish Green
5	Presence/Absence of waxiness on stem	Absent
6	Presence/absence of wings	Present
7	Wing colour	Purplish Green
8	Presence/absence of hairs	Absent
9	Presence/abs of spine	Absent
10	Presence/abs of coloured spot at spine base	Absent
11	Waxiness of plant	Medium
Growth traits		
12	Plant type	Climbing
13	Vigour	High
14	Twining habit	Yes
15	Twining direction	Anticlockwise
16	Stem height	2-10 m
17	No. of stems/plant	1.22
18	Stem colour	Green
19	No. of internodes to first branching	1.11
20	No. of branches above ground	2.89
21	Stem diameter at 15 cm from base (cm)	1.73
22	Stem cross section shape	Quadrangular
23	Internodal length at 1 m height (cm)	10.87
24	Absence/presence of waxiness	Absent
25	Absence/presence of wings	Present
26	Wing position	at the base
27	Wing size at 1 m height	1-2 mm
28	Wing colour	Purple
29	Presence/absence of ridges	Present
30	Scale leaf position	Alternate
Leaf traits- Tender leaves		
31	Leaf colour	Pale green
32	Leaf margin colour	Green
33	Vein colour	Green
34	Petiole colour	All green with purple base
35	Petiole wing colour	Purple
Leaf traits- Matured leaves		
36	Position of leaves	Alternate
37	Leaf density	Low

38	Leaf type	Simple
39	Leatheriness	No
40	Leaf colour	Yellowish
41	Leaf vein colour (upper)	Green
42	Leaf vein colour (lower surface)	Green
43	Leaf margin colour	other
44	Leaf shape	cordate
45	Leaf apex shape	Acute
46	Distance between lobes	Intermediate
47	Upward folding of leaf along main vein	Strong
48	Position of widest part of leaf	Middle
49	Tip length	> 5 mm
50	Tip colour	Light green
51	Petiole length	8 cm
52	PL in correlation to leaf blade	Long (> 2 cm)
53	Petiole colour	All green with purple base
54	Petiole wing colour	Purple
Aerial tuber traits		
55	Absence/presence of aerial tuber	Present
56	Tuber shape	Round
57	A tuber diameter	7.8 cm
58	Skin colour	Light brown
59	Surface texture	Rough
60	Absence/presence of bumps	absent
61	Skin thickness	Thin
62	Flesh colour	Outer green/inner white
Tuber traits		
63	Tuber Length(cm)	17.23
64	Tuber Width(cm)	18.00
65	Per Tuber Weight(kg)	0.32
66	Total Yield	0.85
67	Tuber Shape	Cylindrical
68	Tendency of tuber branch	Highly branch
69	Place where tuber branch	Upper third
70	Roots on the tuber surface	Few
71	Place of roots on the tuber	Entire tuber
72	Absence /presence of blisters on tuber surface	Absence
73	Absence/presence of cracks on the tuber surface	Absence
Cooking quality traits		
74	Ease of peeling	Difficult
75	Preferred cooking method	Baked Boiled
76	Poundability of boiled tuber	Good
77	Cooking time to softness	20 min
78	Discolouration cooking water	Low
79	Appearance of tuber after cooking	Good
80	Colour of tuber after cooking	White, Not Coloured

81	Attractiveness of cooked tuber	Intermediate
82	Erosion of tuber upon cooking	No
83	Texture of cooked tuber	Smooth
84	Stickiness of cooked tuber	Sticky
85	Flavour of cooked tuber	Very Acceptable
86	Absence /Presence of moisture on cooked tuber	Absence
87	Bitterness of cooked tuber	Not bitter
88	Sweetness of cooked tuber	Not Sweet
89	Overall assessment of cooked tuber	High
Tuber quality traits		
90	Dry matter (%)	31.41
91	Sugar (% FW)	0.38
92	Starch (% FW)	11.02
93	Fat (% DW)	1.82
94	Fibre (%DW)	1.42
95	Protein (%)	2.19
96	Anthraco nose Susceptibility	Medium



CARI-DA-1 (IC-592096)

Accession name/number		CARI-DA-1 (IC-592096)
Place of Collection		VK Pur, Little Andaman
Year of collection		2010
Stem traits		
1	Days to emergence	41.00
2	Stem length at 20 days of emergence(cm)	45.00
3	Inter node number at 20 days	5.33
4	Stem colour at 20 days of emergence	Green
5	Presence/Absence of waxiness on stem	Absent
6	Presence/absence of wings	Present
7	Wing colour	Green
8	Presence/absence of hairs	Absent
9	Presence/abs of spine	Absent
10	Presence/abs of coloured spot at spine base	Absent
11	Waxiness of plant	Absent
Growth traits		
12	Plant type	Climbing
13	Vigour	High
14	Twining habit	Yes
15	Twining direction	Anticlockwise
16	Stem height	>10m
17	No. of stems/plant	1.00
18	Stem colour	Green
19	No. of internodes to first branching	2.67
20	No. of branches above ground	2.33
21	Stem diameter at 15 cm from base (cm)	2.47
22	Stem cross section shape	Quadrangular
23	Internodal length at 1 m height (cm)	12.43
24	Absence/presence of waxiness	Absent
25	Absence/presence of wings	Present
26	Wing position	at the base
27	Wing size at 1 m height	>2 mm
28	Wing colour	Purple
29	Presence/absence of ridges	Present
30	Scale leaf position	Opposite
Leaf traits- Tender leaves		
31	Leaf colour	Yellowish
32	Leaf margin colour	Purple
33	Vein colour	Purple
34	Petiole colour	All green with purple base
35	Petiole wing colour	Purple
Leaf traits- Matured leaves		
36	Position of leaves	Opposite
37	Leaf density	High

38	Leaf type	Simple
39	Leatheriness	No
40	Leaf colour	Dark green
41	Leaf vein colour (upper)	Green
42	Leaf vein colour (lower surface)	Green
43	Leaf margin colour	Green
44	Leaf shape	cordate
45	Leaf apex shape	Acute
46	Distance between lobes	Intermediate
47	Upward folding of leaf along main vein	Strong
48	Position of widest part of leaf	Middle
49	Tip length	> 5 mm
50	Tip colour	Light green
51	Petiole length	6.9 cm
52	PL in correlation to leaf blade	Long (> 2 cm)
53	Petiole colour	All green with purple base
54	Petiole wing colour	Purple
Aerial tuber traits		
55	Absence/presence of aerial tuber	Present
56	Tuber shape	Elongate
57	A tuber diameter	6- 10 cm
58	Skin colour	Dark brown
59	Surface texture	Rough
60	Absence/presence of bumps	absent
61	Skin thickness	Thin
62	Flesh colour	Yellow
Tuber traits		
63	Tuber Length(cm)	26.79
64	Tuber Width(cm)	20.71
65	Per Tuber Weight(kg)	0.47
66	Total Yield	0.55
67	Tuber Shape	Cylindrical
68	Tendency of tuber branch	NIL
69	Place where tuber branch	NIL
70	Roots on the tuber surface	Few
71	Place of roots on the tuber	Entire
72	Absence /presence of blisters on tuber surface	Absence
73	Absence/presence of cracks on the tuber surface	Absence
Cooking quality traits		
74	Ease of peeling	Easy
75	Preferred cooking method	Boiled
76	Poundability of boiled tuber	Good
77	Cooking time to softness	30 min
78	Discolouration cooking water	Very Low
79	Appearance of tuber after cooking	Poor
80	Colour of tuber after cooking	White, Not Coloured

81	Attractiveness of cooked tuber	Low
82	Erosion of tuber upon cooking	No
83	Texture of cooked tuber	Fibrous
84	Stickiness of cooked tuber	Sticky
85	Flavour of cooked tuber	Acceptable
86	Absence /Presence of moisture on cooked tuber	Absence
87	Bitterness of cooked tuber	Not bitter
88	Sweetness of cooked tuber	Not Sweet
89	Overall assessment of cooked tuber	Intermediate
Tuber quality traits		
90	Dry matter (%)	31.06
91	Sugar (% FW)	0.35
92	Starch (% FW)	11.30
93	Fat (% DW)	0.70
94	Fibre (%DW)	1.04
95	Protein (%)	3.06
96	Anthracnose Susceptibility	Absent

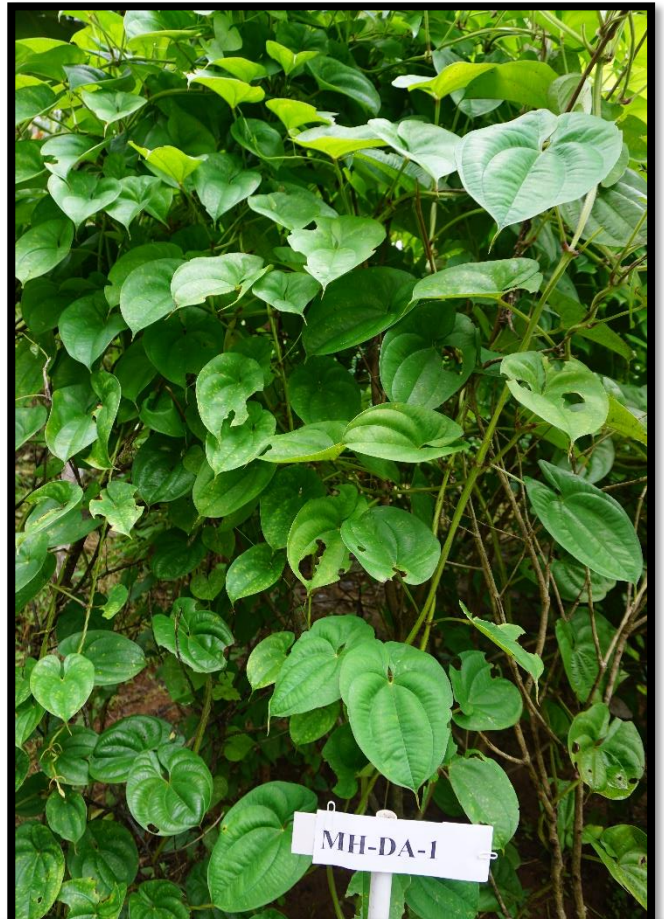


DA-3 (IC-0623824)

Accession name/number		DA-3 (IC-0623824)
Place of Collection		Madhupur, North and Middle Andaman
Year of collection		2012
Stem traits		
1	Days to emergence	41.00
2	Stem length at 20 days of emergence(cm)	33.67
3	Inter node number at 20 days	5.00
4	Stem colour at 20 days of emergence	Green
5	Presence/Absence of waxiness on stem	Absent
6	Presence/absence of wings	Present
7	Wing colour	Green
8	Presence/absence of hairs	Absent
9	Presence/abs of spine	Absent
10	Presence/abs of coloured spot at spine base	Absent
11	Waxiness of plant	Low
Growth traits		
12	Plant type	Climbing
13	Vigour	High
14	Twining habit	Yes
15	Twining direction	Anticlockwise
16	Stem height	>10m
17	No. of stems/plant	1.00
18	Stem colour	Green
19	No. of internodes to first branching	2.33
20	No. of branches above ground	2.33
21	Stem diameter at 15 cm from base (cm)	2.77
22	Stem cross section shape	Quadrangular
23	Internodal length at 1 m height (cm)	14.77
24	Absence/presence of waxiness	Absent
25	Absence/presence of wings	Present
26	Wing position	at the base
27	Wing size at 1 m height	>2 mm
28	Wing colour	Purple
29	Presence/absence of ridges	Present
30	Scale leaf position	Opposite
Leaf traits- Tender leaves		
31	Leaf colour	Purplish green
32	Leaf margin colour	Purple
33	Vein colour	Purple
34	Petiole colour	All green with purple base
35	Petiole wing colour	Purple
Leaf traits- Matured leaves		
36	Position of leaves	Opposite
37	Leaf density	High

38	Leaf type	Simple
39	Leatheriness	No
40	Leaf colour	Dark green
41	Leaf vein colour (upper)	Yellowish
42	Leaf vein colour (lower surface)	Green
43	Leaf margin colour	Green
44	Leaf shape	Sagittate long
45	Leaf apex shape	Acute
46	Distance between lobes	Intermediate
47	Upward folding of leaf along main vein	Strong
48	Position of widest part of leaf	Middle
49	Tip length	> 5 mm
50	Tip colour	Light green
51	Petiole length	>_10 cm
52	PL in correlation to leaf blade	Long (> 2 cm)
53	Petiole colour	All green with purple base
54	Petiole wing colour	Purple
Aerial tuber traits		
55	Absence/presence of aerial tuber	Present
56	Tuber shape	Elongate
57	A tuber diameter	6- 10 cm
58	Skin colour	Dark brown
59	Surface texture	Rough
60	Absence/presence of bumps	absent
61	Skin thickness	Thin
62	Flesh colour	White
Tuber traits		
63	Tuber Length(cm)	32.87
64	Tuber Width(cm)	19.56
65	Per Tuber Weight(kg)	0.66
66	Total Yield	0.84
67	Tuber Shape	Cylindrical
68	Tendency of tuber branch	NIL
69	Place where tuber branch	NIL
70	Roots on the tuber surface	FEW
71	Place of roots on the tuber	Entire
72	Absence /presence of blisters on tuber surface	Absence
73	Absence/presence of cracks on the tuber surface	Absence
Cooking quality traits		
74	Ease of peeling	Easy
75	Preferred cooking method	Boiled
76	Poundability of boiled tuber	Good
77	Cooking time to softness	25 min
78	Discolouration cooking water	Very Low
79	Appearance of tuber after cooking	Good
80	Colour of tuber after cooking	White, Not Coloured

81	Attractiveness of cooked tuber	Low
82	Erosion of tuber upon cooking	No
83	Texture of cooked tuber	Grainy
84	Stickiness of cooked tuber	Sticky
85	Flavour of cooked tuber	Acceptable
86	Absence /Presence of moisture on cooked tuber	Absence
87	Bitterness of cooked tuber	Not bitter
88	Sweetness of cooked tuber	Not Sweet
89	Overall assessment of cooked tuber	Low
Tuber quality traits		
90	Dry matter (%)	24.72
91	Sugar (% FW)	0.40
92	Starch (% FW)	9.96
93	Fat (% DW)	1.20
94	Fibre (%DW)	1.38
95	Protein (%)	2.63
96	Anthracnose Susceptibility	Low



MH-DA-1 / AD-06

Accession name/number		MH-DA-1 / AD-06
Place of Collection		Port Blair, South Andaman
Year of collection		2021
Stem traits		
1	Days to emergence	40.00
2	Stem length at 20 days of emergence(cm)	65.00
3	Inter node number at 20 days	4.00
4	Stem colour at 20 days of emergence	Brownish green
5	Presence/Absence of waxiness on stem	Absent
6	Presence/absence of wings	Present
7	Wing colour	brownish green
8	Presence/absence of hairs	Absent
9	Presence/abs of spine	Absent
10	Presence/abs of coloured spot at spine base	Absent
11	Waxiness of plant	Low
Growth traits		
12	Plant type	Climbing
13	Vigour	High
14	Twining habit	Yes
15	Twining direction	Anticlockwise
16	Stem height	>10m
17	No. of stems/plant	1.33
18	Stem colour	Brownish green
19	No. of internodes to first branching	2.00
20	No. of branches above ground	1.00
21	Stem diameter at 15 cm from base (cm)	3.30
22	Stem cross section shape	Quadrangular
23	Internodal length at 1 m height (cm)	18.53
24	Absence/presence of waxiness	Absent
25	Absence/presence of wings	Present
26	Wing position	above the base
27	Wing size at 1 m height	>2 mm
28	Wing colour	Purple
29	Presence/absence of ridges	Present
30	Scale leaf position	Both
Leaf traits- Tender leaves		
31	Leaf colour	Purple
32	Leaf margin colour	Purple
33	Vein colour	Purple
34	Petiole colour	All green with purple base
35	Petiole wing colour	Purple
Leaf traits- Matured leaves		
36	Position of leaves	Alternate at base/opposite above
37	Leaf density	High

38	Leaf type	Simple
39	Leatheriness	No
40	Leaf colour	Dark green
41	Leaf vein colour (upper)	Yellowish
42	Leaf vein colour (lower surface)	Green
43	Leaf margin colour	other
44	Leaf shape	Ovate
45	Leaf apex shape	Acute
46	Distance between lobes	No measurable distance
47	Upward folding of leaf along main vein	Strong
48	Position of widest part of leaf	Middle
49	Tip length	> 5 mm
50	Tip colour	Light green
51	Petiole length	>_10 cm
52	PL in correlation to leaf blade	Long (> 2 cm)
53	Petiole colour	All green with purple base
54	Petiole wing colour	Purple
Aerial tuber traits		
55	Absence/presence of aerial tuber	Present
56	Tuber shape	Irregular
57	A tuber diameter	12.8 cm
58	Skin colour	Dark brown
59	Surface texture	Rough
60	Absence/presence of bumps	absent
61	Skin thickness	Thick
62	Flesh colour	Yellowish white
Tuber traits		
63	Tuber Length(cm)	17.83
64	Tuber Width(cm)	20.19
65	Per Tuber Weight(kg)	0.70
66	Total Yield	0.69
67	Tuber Shape	Cylindrical
68	Tendency of tuber branch	Highly branched
69	Place where tuber branch	Upper third
70	Roots on the tuber surface	Few
71	Place of roots on the tuber	Upper
72	Absence /presence of blisters on tuber surface	Absence
73	Absence/presence of cracks on the tuber surface	Absence
Cooking quality traits		
74	Ease of peeling	Difficult
75	Preferred cooking method	Boiled
76	Poundability of boiled tuber	Poor
77	Cooking time to softness	30 min
78	Discolouration cooking water	Intermediate
79	Appearance of tuber after cooking	Poor
80	Colour of tuber after cooking	Highly Coloured

81	Attractiveness of cooked tuber	Intermediate
82	Erosion of tuber upon cooking	No
83	Texture of cooked tuber	Fibrous
84	Stickiness of cooked tuber	Very Sticky
85	Flavour of cooked tuber	Acceptable
86	Absence /Presence of moisture on cooked tuber	Absence
87	Bitterness of cooked tuber	Not bitter
88	Sweetness of cooked tuber	Not Sweet
89	Overall assessment of cooked tuber	Low
Tuber quality traits		
90	Dry matter (%)	30.72
91	Sugar (% FW)	0.39
92	Starch (% FW)	12.31
93	Fat (% DW)	1.30
94	Fibre (%DW)	0.46
95	Protein (%)	3.06
96	Anthracnose Susceptibility	Low



HL-1 / ADS-01

Accession name/number		HL-1 / ADS-01
Place of Collection		Havelock, South Andaman
Year of collection		2012
Stem traits		
1	Days to emergence	41.33
2	Stem length at 20 days of emergence(cm)	54.67
3	Inter node number at 20 days	5.67
4	Stem colour at 20 days of emergence	Purplish Green
5	Presence/Absence of waxiness on stem	Absent
6	Presence/absence of wings	Present
7	Wing colour	Green with purple edge
8	Presence/absence of hairs	Absent
9	Presence/abs of spine	Absent
10	Presence/abs of coloured spot at spine base	Absent
11	Waxiness of plant	High
Growth traits		
12	Plant type	Climbing
13	Vigour	High
14	Twining habit	Yes
15	Twining direction	Anticlockwise
16	Stem height	2-10 m
17	No. of stems/plant	2.00
18	Stem colour	Green
19	No. of internodes to first branching	5.67
20	No. of branches above ground	2.33
21	Stem diameter at 15 cm from base (cm)	2.17
22	Stem cross section shape	Quadrangular
23	Internodal length at 1 m height (cm)	17.83
24	Absence/presence of waxiness	Absent
25	Absence/presence of wings	Present
26	Wing position	Above base
27	Wing size at 1 m height	1-2 mm
28	Wing colour	Purple
29	Presence/absence of ridges	Present
30	Scale leaf position	Opposite
Leaf traits- Tender leaves		
31	Leaf colour	Yellowish
32	Leaf margin colour	Purple
33	Vein colour	Green
34	Petiole colour	All green with purple base
35	Petiole wing colour	Purple
Leaf traits- Matured leaves		
36	Position of leaves	Opposite
37	Leaf density	High

38	Leaf type	Simple
39	Leatheriness	No
40	Leaf colour	Dark green
41	Leaf vein colour (upper)	Green
42	Leaf vein colour (lower surface)	Green
43	Leaf margin colour	Green
44	Leaf shape	Sagittate long
45	Leaf apex shape	Acute
46	Distance between lobes	Intermediate
47	Upward folding of leaf along main vein	Strong
48	Position of widest part of leaf	Middle
49	Tip length	> 5 mm
50	Tip colour	Light green
51	Petiole length	8 cm
52	PL in correlation to leaf blade	Long (> 2 cm)
53	Petiole colour	All green with purple base
54	Petiole wing colour	Green
Aerial tuber traits		
55	Absence/presence of aerial tuber	Present
56	Tuber shape	Elongate
57	A tuber diameter	6.7 cm
58	Skin colour	Light brown
59	Surface texture	Rough
60	Absence/presence of bumps	absent
61	Skin thickness	Thin
62	Flesh colour	outer purple/inner yellow
Tuber traits		
63	Tuber Length(cm)	10.45
64	Tuber Width(cm)	26.08
65	Per Tuber Weight(kg)	0.30
66	Total Yield	0.38
67	Tuber Shape	Round
68	Tendency of tuber branch	NIL
69	Place where tuber branch	NIL
70	Roots on the tuber surface	Few
71	Place of roots on the tuber	Entire Tuber
72	Absence /presence of blisters on tuber surface	Presence
73	Absence/presence of cracks on the tuber surface	Presence
Cooking quality traits		
74	Ease of peeling	Easy
75	Preferred cooking method	Boiled
76	Poundability of boiled tuber	Good
77	Cooking time to softness	20 min
78	Discolouration cooking water	Intermediate
79	Appearance of tuber after cooking	Good
80	Colour of tuber after cooking	White, Not Coloured

81	Attractiveness of cooked tuber	High
82	Erosion of tuber upon cooking	No
83	Texture of cooked tuber	Grainy
84	Stickiness of cooked tuber	Stick
85	Flavour of cooked tuber	Acceptable
86	Absence /Presence of moisture on cooked tuber	Absence
87	Bitterness of cooked tuber	Not bitter
88	Sweetness of cooked tuber	Not Sweet
89	Overall assessment of cooked tuber	Intermediate
Tuber quality traits		
90	Dry matter (%)	28.73
91	Sugar (% FW)	0.42
92	Starch (% FW)	15.21
93	Fat (% DW)	0.89
94	Fibre (%DW)	0.74
95	Protein (%)	2.68
96	Anthraco nose Susceptibility	High



HB-2 (IC-0623833)

Accession name/number		HB-2 (IC-0623833)
Place of Collection		Harminder Bay, Little Andaman
Year of collection		2014
Stem traits		
1	Days to emergence	41.67
2	Stem length at 20 days of emergence(cm)	41.33
3	Inter node number at 20 days	5.00
4	Stem colour at 20 days of emergence	Green
5	Presence/Absence of waxiness on stem	Absent
6	Presence/absence of wings	Present
7	Wing colour	Green
8	Presence/absence of hairs	Absent
9	Presence/abs of spine	Absent
10	Presence/abs of coloured spot at spine base	Absent
11	Waxiness of plant	Low
Growth traits		
12	Plant type	Climbing
13	Vigour	Low
14	Twining habit	Yes
15	Twining direction	Anticlockwise
16	Stem height	2-10 m
17	No. of stems/plant	1.67
18	Stem colour	Green
19	No. of internodes to first branching	3.00
20	No. of branches above ground	2.67
21	Stem diameter at 15 cm from base (cm)	1.70
22	Stem cross section shape	Quadrangular
23	Internodal length at 1 m height (cm)	9.87
24	Absence/presence of waxiness	Absent
25	Absence/presence of wings	Present
26	Wing position	at the base
27	Wing size at 1 m height	1-2 mm
28	Wing colour	Purple
29	Presence/absence of ridges	Present
30	Scale leaf position	Opposite
Leaf traits- Tender leaves		
31	Leaf colour	Pale green
32	Leaf margin colour	Purple
33	Vein colour	Yellowish
34	Petiole colour	Green
35	Petiole wing colour	Purple
Leaf traits- Matured leaves		
36	Position of leaves	Opposite
37	Leaf density	Low

38	Leaf type	Simple
39	Leatheriness	No
40	Leaf colour	Pale green
41	Leaf vein colour (upper)	Yellowish
42	Leaf vein colour (lower surface)	Green
43	Leaf margin colour	Green
44	Leaf shape	Sagittate long
45	Leaf apex shape	Acute
46	Distance between lobes	Intermediate
47	Upward folding of leaf along main vein	Strong
48	Position of widest part of leaf	Middle
49	Tip length	> 5 mm
50	Tip colour	Light green
51	Petiole length	6.9 cm
52	PL in correlation to leaf blade	Long (> 2 cm)
53	Petiole colour	All green with purple base
54	Petiole wing colour	Purple
Aerial tuber traits		
55	Absence/presence of aerial tuber	Present
56	Tuber shape	Irregular
57	A tuber diameter	7 cm
58	Skin colour	Dark brown
59	Surface texture	Rough
60	Absence/presence of bumps	absent
61	Skin thickness	Thin
62	Flesh colour	White
Tuber traits		
63	Tuber Length(cm)	10.77
64	Tuber Width(cm)	17.53
65	Per Tuber Weight(kg)	0.18
66	Total Yield	0.95
67	Tuber Shape	Cylindrical
68	Tendency of tuber branch	Nil
69	Place where tuber branch	Nil
70	Roots on the tuber surface	Few
71	Place of roots on the tuber	Entire tuber
72	Absence /presence of blisters on tuber surface	Absence
73	Absence/presence of cracks on the tuber surface	Absence
Cooking quality traits		
74	Ease of peeling	Easy
75	Preferred cooking method	Baked Boiled
76	Poundability of boiled tuber	Good
77	Cooking time to softness	20 min
78	Discolouration cooking water	Intermediate
79	Appearance of tuber after cooking	Good
80	Colour of tuber after cooking	White, Not Coloured

81	Attractiveness of cooked tuber	High
82	Erosion of tuber upon cooking	No
83	Texture of cooked tuber	Grainy
84	Stickiness of cooked tuber	Sticky
85	Flavour of cooked tuber	Acceptable
86	Absence /Presence of moisture on cooked tuber	Absence
87	Bitterness of cooked tuber	Not bitter
88	Sweetness of cooked tuber	Not Sweet
89	Overall assessment of cooked tuber	Intermediate
Tuber quality traits		
90	Dry matter (%)	35.20
91	Sugar (% FW)	0.43
92	Starch (% FW)	12.51
93	Fat (% DW)	1.20
94	Fibre (%DW)	0.62
95	Protein (%)	3.06
96	Anthraco nose Susceptibility	Low



HB-DA-1 / AD-01

Accession name/number		HB-DA-1 / AD-01
Place of Collection		Harminder Bay, Little Andaman
Year of collection		2014
Stem traits		
1	Days to emergence	35.00
2	Stem length at 20 days of emergence(cm)	55.00
3	Inter node number at 20 days	5.33
4	Stem colour at 20 days of emergence	Green
5	Presence/Absence of waxiness on stem	Absent
6	Presence/absence of wings	Present
7	Wing colour	Green
8	Presence/absence of hairs	Absent
9	Presence/abs of spine	Absent
10	Presence/abs of coloured spot at spine base	Absent
11	Waxiness of plant	Medium
Growth traits		
12	Plant type	Climbing
13	Vigour	High
14	Twining habit	Yes
15	Twining direction	Anticlockwise
16	Stem height	2-10 m
17	No. of stems/plant	1.67
18	Stem colour	Green
19	No. of internodes to first branching	11.33
20	No. of branches above ground	2.00
21	Stem diameter at 15 cm from base (cm)	1.77
22	Stem cross section shape	Quadrangular
23	Internodal length at 1 m height (cm)	14.30
24	Absence/presence of waxiness	Absent
25	Absence/presence of wings	Present
26	Wing position	Above base
27	Wing size at 1 m height	>2 mm
28	Wing colour	Green
29	Presence/absence of ridges	Present
30	Scale leaf position	Alternate
Leaf traits- Tender leaves		
31	Leaf colour	Yellowish
32	Leaf margin colour	Purple
33	Vein colour	Pale purple
34	Petiole colour	All purplish green with purple base
35	Petiole wing colour	Green with purple edges

Leaf traits- Matured leaves		
36	Position of leaves	Alternate
37	Leaf density	High
38	Leaf type	Simple
39	Leatheriness	No
40	Leaf colour	Dark green
41	Leaf vein colour (upper)	Yellowish
42	Leaf vein colour (lower surface)	Green
43	Leaf margin colour	Green
44	Leaf shape	Sagittate long
45	Leaf apex shape	Acute
46	Distance between lobes	Intermediate
47	Upward folding of leaf along main vein	Strong
48	Position of widest part of leaf	Middle
49	Tip length	> 5 mm
50	Tip colour	Light green
51	Petiole length	6-9 cm
52	PL in correlation to leaf blade	Long (> 2 cm)
53	Petiole colour	All green with purple base
54	Petiole wing colour	Green with purple edge
Aerial tuber traits		
55	Absence/presence of aerial tuber	Present
56	Tuber shape	Oval
57	A tuber diameter	> 10 cm
58	Skin colour	Light brown
59	Surface texture	Rough
60	Absence/presence of bumps	absent
61	Skin thickness	Thin
62	Flesh colour	Yellow
Tuber traits		
63	Tuber Length(cm)	13.92
64	Tuber Width(cm)	32.34
65	Per Tuber Weight(kg)	0.88
66	Total Yield	0.90
67	Tuber Shape	Round
68	Tendency of tuber branch	Nil
69	Place where tuber branch	Nil
70	Roots on the tuber surface	Many
71	Place of roots on the tuber	Upper
72	Absence /presence of blisters on tuber surface	Absence
73	Absence/presence of cracks on the tuber surface	Presence
Cooking quality traits		
74	Ease of peeling	Difficult
75	Preferred cooking method	Boiled
76	Poundability of boiled tuber	Poor
77	Cooking time to softness	35 min

78	Discolouration cooking water	Very low
79	Appearance of tuber after cooking	Poor
80	Colour of tuber after cooking	White, not coloured
81	Attractiveness of cooked tuber	Low
82	Erosion of tuber upon cooking	No
83	Texture of cooked tuber	Grainy
84	Stickiness of cooked tuber	Sticky
85	Flavour of cooked tuber	Acceptable
86	Absence /Presence of moisture on cooked tuber	Absence
87	Bitterness of cooked tuber	Not bitter
88	Sweetness of cooked tuber	Sweet
89	Overall assessment of cooked tuber	Intermediate
Tuber quality traits		
90	Dry matter (%)	35.49
91	Sugar (% FW)	0.36
92	Starch (% FW)	11.71
93	Fat (% DW)	0.70
94	Fibre (%DW)	0.42
95	Protein (%)	3.06
96	Anthracoese Susceptibility	Medium

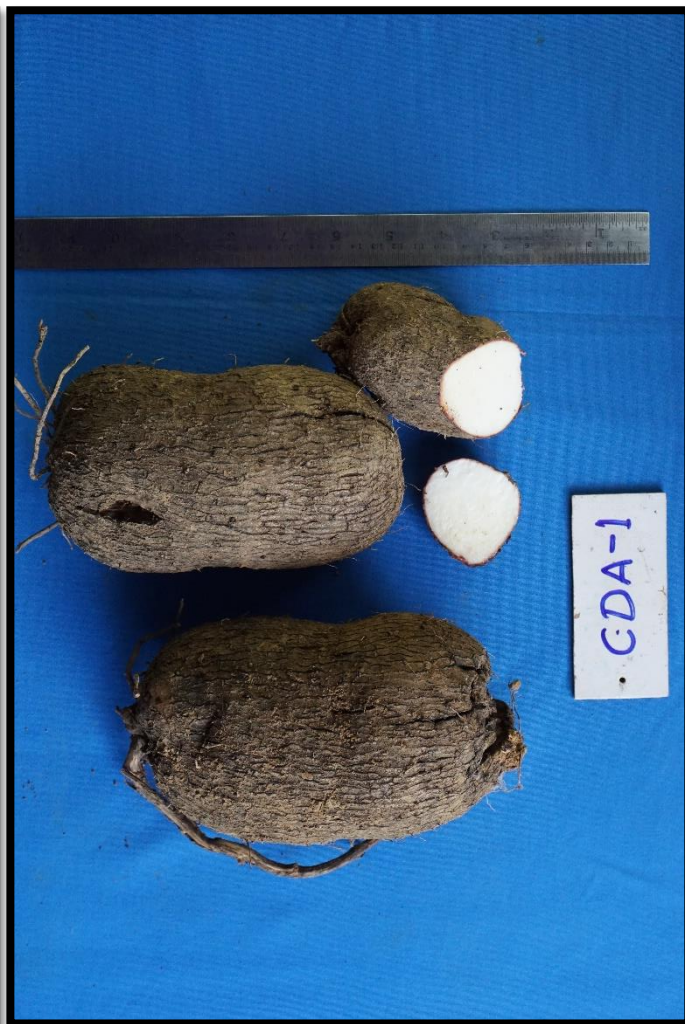


HB-DA-2 / AD-02

Accession name/number		HB-DA-2 / ADJ-02
Place of Collection		Harminder Bay, Little Andaman
Year of collection		2014
Stem traits		
1	Days to emergence	36.67
2	Stem length at 20 days of emergence(cm)	55.00
3	Inter node number at 20 days	5.33
4	Stem colour at 20 days of emergence	Green
5	Presence/Absence of waxiness on stem	Absent
6	Presence/absence of wings	Present
7	Wing colour	Green
8	Presence/absence of hairs	Absent
9	Presence/abs of spine	Absent
10	Presence/abs of coloured spot at spine base	Absent
11	Waxiness of plant	Low
Growth traits		
12	Plant type	Climbing
13	Vigour	Low
14	Twining habit	Yes
15	Twining direction	Anticlockwise
16	Stem height	2-10 m
17	No. of stems/plant	2.33
18	Stem colour	Green
19	No. of internodes to first branching	1.00
20	No. of branches above ground	2.67
21	Stem diameter at 15 cm from base (cm)	1.67
22	Stem cross section shape	Quadrangular
23	Internodal length at 1 m height (cm)	7.30
24	Absence/presence of waxiness	Absent
25	Absence/presence of wings	Present
26	Wing position	Above base
27	Wing size at 1 m height	>2 mm
28	Wing colour	Green
29	Presence/absence of ridges	Present
30	Scale leaf position	Opposite
Leaf traits- Tender leaves		
31	Leaf colour	Yellowish

32	Leaf margin colour	Purple
33	Vein colour	Green
34	Petiole colour	All green with purple base
35	Petiole wing colour	Green
Leaf traits- Matured leaves		
36	Position of leaves	Opposite
37	Leaf density	High
38	Leaf type	Simple
39	Leatheriness	No
40	Leaf colour	Dark green
41	Leaf vein colour (upper)	Yellowish
42	Leaf vein colour (lower surface)	Green
43	Leaf margin colour	Green
44	Leaf shape	Cordate
45	Leaf apex shape	Acute
46	Distance between lobes	Intermediate
47	Upward folding of leaf along main vein	Strong
48	Position of widest part of leaf	Middle
49	Tip length	2-5 mm
50	Tip colour	Light green
51	Petiole length	<_ 5 cm
52	PL in correlation to leaf blade	Short (< 2 cm)
53	Petiole colour	All green with purple base
54	Petiole wing colour	Green
Aerial tuber traits		
55	Absence/presence of aerial tuber	Present
56	Tuber shape	Oval
57	A tuber diameter	> 10 cm
58	Skin colour	Light brown
59	Surface texture	Rough
60	Absence/presence of bumps	absent
61	Skin thickness	Thin
62	Flesh colour	Yellowish white
Tuber traits		
63	Tuber Length(cm)	15.94
64	Tuber Width(cm)	32.62
65	Per Tuber Weight(kg)	0.97
66	Total Yield	1.04
67	Tuber Shape	Irregular
68	Tendency of tuber branch	Branched
69	Place where tuber branch	Middle
70	Roots on the tuber surface	Few
71	Place of roots on the tuber	Entire Tuber
72	Absence /presence of blisters on tuber surface	Absence
73	Absence/presence of cracks on the tuber surface	Presence
Cooking quality traits		

74	Ease of peeling	Easy
75	Preferred cooking method	Boiled
76	Poundability of boiled tuber	Good
77	Cooking time to softness	20 min
78	Discolouration cooking water	Very Low
79	Appearance of tuber after cooking	Good
80	Colour of tuber after cooking	White, Not Coloured
81	Attractiveness of cooked tuber	High
82	Erosion of tuber upon cooking	No
83	Texture of cooked tuber	Smooth
84	Stickiness of cooked tuber	Sticky
85	Flavour of cooked tuber	Acceptable
86	Absence /Presence of moisture on cooked tuber	Absence
87	Bitterness of cooked tuber	Not bitter
88	Sweetness of cooked tuber	Not Sweet
89	Overall assessment of cooked tuber	High
90	Dry matter (%)	25.41
Tuber quality traits		
91	Sugar (% FW)	0.33
92	Starch (% FW)	10.89
93	Fat (% DW)	1.70
94	Fibre (%DW)	0.76
95	Protein (%)	1.75
96	Anthracnose Susceptibility	Low



CDA-1 (IC-0623829)

Accession name/number		CDA-1 (IC-0623829)
Place of Collection		Chowra, Nicobar
Year of collection		2016
Stem traits		
1	Days to emergence	41.33
2	Stem length at 20 days of emergence(cm)	68.33
3	Inter node number at 20 days	4.67
4	Stem colour at 20 days of emergence	Green
5	Presence/Absence of waxiness on stem	Absent
6	Presence/absence of wings	Present
7	Wing colour	Green
8	Presence/absence of hairs	Absent
9	Presence/abs of spine	Absent
10	Presence/abs of coloured spot at spine base	Absent
11	Waxiness of plant	Medium
Growth traits		
12	Plant type	Climbing
13	Vigour	Low
14	Twining habit	Yes
15	Twining direction	Anticlockwise
16	Stem height	2-10 m
17	No. of stems/plant	2.00
18	Stem colour	Green
19	No. of internodes to first branching	1.67
20	No. of branches above ground	2.67
21	Stem diameter at 15 cm from base (cm)	1.43
22	Stem cross section shape	Quadrangular
23	Internodal length at 1 m height (cm)	12.97
24	Absence/presence of waxiness	Absent
25	Absence/presence of wings	Present
26	Wing position	Above base
27	Wing size at 1 m height	>2 mm
28	Wing colour	Green
29	Presence/absence of ridges	Present
30	Scale leaf position	Opposite
Leaf traits- Tender leaves		
31	Leaf colour	Yellowish
32	Leaf margin colour	Purple
33	Vein colour	Purple
34	Petiole colour	All green with purple base
35	Petiole wing colour	Purple
Leaf traits- Matured leaves		
36	Position of leaves	Opposite
37	Leaf density	Low

38	Leaf type	Simple
39	Leatheriness	No
40	Leaf colour	Pale green
41	Leaf vein colour (upper)	Yellowish
42	Leaf vein colour (lower surface)	Green
43	Leaf margin colour	Green
44	Leaf shape	Cordate
45	Leaf apex shape	Acute
46	Distance between lobes	Intermediate
47	Upward folding of leaf along main vein	Strong
48	Position of widest part of leaf	Middle
49	Tip length	2-5 mm
50	Tip colour	Light green
51	Petiole length	6-9 cm
52	PL in correlation to leaf blade	Long (> 2 cm)
53	Petiole colour	All green with purple base
54	Petiole wing colour	Purple
Aerial tuber traits		
55	Absence/presence of aerial tuber	Absent
56	Tuber shape	NA
57	A tuber diameter	NA
58	Skin colour	NA
59	Surface texture	NA
60	Absence/presence of bumps	NA
61	Skin thickness	NA
62	Flesh colour	NA
Tuber traits		
63	Tuber Length(cm)	13.49
64	Tuber Width(cm)	26.99
65	Per Tuber Weight(kg)	0.49
66	Total Yield	0.56
67	Tuber Shape	Cylindrical
68	Tendency of tuber branch	Branched
69	Place where tuber branch	Upper Third
70	Roots on the tuber surface	Nil
71	Place of roots on the tuber	Nil
72	Absence /presence of blisters on tuber surface	Absence
73	Absence/presence of cracks on the tuber surface	Presence
Cooking quality traits		
74	Ease of peeling	Easy
75	Preferred cooking method	Boiled
76	Poundability of boiled tuber	Poor
77	Cooking time to softness	25 min
78	Discolouration cooking water	Intermediate
79	Appearance of tuber after cooking	Fair
80	Colour of tuber after cooking	White, Not Coloured

81	Attractiveness of cooked tuber	Low
82	Erosion of tuber upon cooking	No
83	Texture of cooked tuber	Grainy
84	Stickiness of cooked tuber	Very Sticky
85	Flavour of cooked tuber	Acceptable
86	Absence /Presence of moisture on cooked tuber	Absence
87	Bitterness of cooked tuber	Not bitter
88	Sweetness of cooked tuber	Not Sweet
89	Overall assessment of cooked tuber	Low
Tuber quality traits		
90	Dry matter (%)	34.65
91	Sugar (% FW)	0.50
92	Starch (% FW)	15.86
93	Fat (% DW)	0.55
94	Fibre (%DW)	1.42
95	Protein (%)	2.19
96	Anthracnose Susceptibility	Medium



SG-1 / ADS-02

Accession name/number		SG-1 / ADS-02
Place of Collection		Sippighat, South Andaman
Year of collection		2013
Stem traits		
1	Days to emergence	40.00
2	Stem length at 20 days of emergence(cm)	49.00
3	Inter node number at 20 days	3.67
4	Stem colour at 20 days of emergence	Purplish Green
5	Presence/Absence of waxiness on stem	Absent
6	Presence/absence of wings	Present
7	Wing colour	Purplish Green
8	Presence/absence of hairs	Absent
9	Presence/abs of spine	Absent
10	Presence/abs of coloured spot at spine base	Absent
11	Waxiness of plant	Absent
Growth traits		
12	Plant type	Climbing
13	Vigour	High
14	Twining habit	Yes
15	Twining direction	Anticlockwise
16	Stem height	>10m
17	No. of stems/plant	1.00
18	Stem colour	Green
19	No. of internodes to first branching	2.67
20	No. of branches above ground	2.33
21	Stem diameter at 15 cm from base (cm)	1.83
22	Stem cross section shape	octagonal
23	Internodal length at 1 m height (cm)	11.17
24	Absence/presence of waxiness	Absent
25	Absence/presence of wings	Present
26	Wing position	at the base
27	Wing size at 1 m height	1-2 mm
28	Wing colour	Purple
29	Presence/absence of ridges	Present
30	Scale leaf position	Opposite
Leaf traits- Tender leaves		
31	Leaf colour	Yellowish
32	Leaf margin colour	Purple
33	Vein colour	Purple
34	Petiole colour	All green with purple base
35	Petiole wing colour	Purple
Leaf traits- Matured leaves		
36	Position of leaves	Alternate
37	Leaf density	High

38	Leaf type	Simple
39	Leatheriness	Yes
40	Leaf colour	Dark green
41	Leaf vein colour (upper)	Yellowish
42	Leaf vein colour (lower surface)	Green
43	Leaf margin colour	Purple
44	Leaf shape	cordate
45	Leaf apex shape	Acute
46	Distance between lobes	Intermediate
47	Upward folding of leaf along main vein	Strong
48	Position of widest part of leaf	Middle
49	Tip length	> 5 mm
50	Tip colour	Light green
51	Petiole length	>_10 cm
52	PL in correlation to leaf blade	Long (> 2 cm)
53	Petiole colour	All green with purple base
54	Petiole wing colour	Purple
Aerial tuber traits		
55	Absence/presence of aerial tuber	Present
56	Tuber shape	Elongate
57	A tuber diameter	2.5 cm
58	Skin colour	Dark brown
59	Surface texture	Rough
60	Absence/presence of bumps	absent
61	Skin thickness	Thin
62	Flesh colour	Outer purple/inner yellowish
Tuber traits		
63	Tuber Length(cm)	24.26
64	Tuber Width(cm)	19.77
65	Per Tuber Weight(kg)	0.38
66	Total Yield	0.48
67	Tuber Shape	Cylindrical
68	Tendency of tuber branch	Branched
69	Place where tuber branch	Middle
70	Roots on the tuber surface	Many
71	Place of roots on the tuber	Entire
72	Absence /presence of blisters on tuber surface	Absence
73	Absence/presence of cracks on the tuber surface	Absence
Cooking quality traits		
74	Ease of peeling	Easy
75	Preferred cooking method	Boiled
76	Poundability of boiled tuber	Good
77	Cooking time to softness	20 min
78	Discolouration cooking water	Very Low
79	Appearance of tuber after cooking	Good
80	Colour of tuber after cooking	White, Not Coloured

81	Attractiveness of cooked tuber	Low
82	Erosion of tuber upon cooking	No
83	Texture of cooked tuber	Grainy
84	Stickiness of cooked tuber	Sticky
85	Flavour of cooked tuber	Acceptable
86	Absence /Presence of moisture on cooked tuber	Absence
87	Bitterness of cooked tuber	Not bitter
88	Sweetness of cooked tuber	Sweet
89	Overall assessment of cooked tuber	Intermediate
Tuber quality traits		
90	Dry matter (%)	33.35
91	Sugar (% FW)	0.36
92	Starch (% FW)	16.43
93	Fat (% DW)	1.00
94	Fibre (%DW)	0.48
95	Protein (%)	3.06
96	Anthracnose Susceptibility	Absent



RKP-1 (IC-0623831)

Accession name/number		RKP-1 (IC-0623831)
Place of Collection		RK Pur, Little Andaman
Year of collection		2016
Stem traits		
1	Days to emergence	37.33
2	Stem length at 20 days of emergence(cm)	39.33
3	Inter node number at 20 days	4.33
4	Stem colour at 20 days of emergence	Purplish Green
5	Presence/Absence of waxiness on stem	Absent
6	Presence/absence of wings	Present
7	Wing colour	Green with purple edge
8	Presence/absence of hairs	Absent
9	Presence/abs of spine	Absent
10	Presence/abs of coloured spot at spine base	Absent
11	Waxiness of plant	Medium
Growth traits		
12	Plant type	Climbing
13	Vigour	High
14	Twining habit	Yes
15	Twining direction	Anticlockwise
16	Stem height	2-10 m
17	No. of stems/plant	1.67
18	Stem colour	Purplish green
19	No. of internodes to first branching	1.33
20	No. of branches above ground	2.67
21	Stem diameter at 15 cm from base (cm)	2.23
22	Stem cross section shape	other
23	Internodal length at 1 m height (cm)	9.87
24	Absence/presence of waxiness	Absent
25	Absence/presence of wings	Present
26	Wing position	At the base
27	Wing size at 1 m height	>2 mm
28	Wing colour	Green with purple edge
29	Presence/absence of ridges	Present
30	Scale leaf position	Both
Leaf traits- Tender leaves		
31	Leaf colour	Purplish
32	Leaf margin colour	Purple
33	Vein colour	Purple
34	Petiole colour	All green with purple base
35	Petiole wing colour	Purple
Leaf traits- Matured leaves		
36	Position of leaves	Alternate
37	Leaf density	High

38	Leaf type	Simple
39	Leatheriness	Yes
40	Leaf colour	Dark green
41	Leaf vein colour (upper)	Green
42	Leaf vein colour (lower surface)	Green
43	Leaf margin colour	Green
44	Leaf shape	Cordate
45	Leaf apex shape	Acute
46	Distance between lobes	Intermediate
47	Upward folding of leaf along main vein	Strong
48	Position of widest part of leaf	Third upper
49	Tip length	> 5 mm
50	Tip colour	Light green
51	Petiole length	6-9 cm
52	PL in correlation to leaf blade	Medium (= 2 cm)
53	Petiole colour	All green with purple base
54	Petiole wing colour	Purple
Aerial tuber traits		
55	Absence/presence of aerial tuber	Present
56	Tuber shape	Irregular
57	A tuber diameter	> 10 cm
58	Skin colour	Dark brown
59	Surface texture	Rough
60	Absence/presence of bumps	absent
61	Skin thickness	Thin
62	Flesh colour	Yellowish white
Tuber traits		
63	Tuber Length(cm)	21.41
64	Tuber Width(cm)	35.77
65	Per Tuber Weight(kg)	0.87
66	Total Yield	1.04
67	Tuber Shape	Cylindrical
68	Tendency of tuber branch	Branched
69	Place where tuber branch	Upper Third
70	Roots on the tuber surface	Many
71	Place of roots on the tuber	Entire Tuber
72	Absence /presence of blisters on tuber surface	Absence
73	Absence/presence of cracks on the tuber surface	Absence
Cooking quality traits		
74	Ease of peeling	Easy
75	Preferred cooking method	Boiled
76	Poundability of boiled tuber	Good
77	Cooking time to softness	20 min
78	Discolouration cooking water	Very low
79	Appearance of tuber after cooking	Good
80	Colour of tuber after cooking	White, not coloured

81	Attractiveness of cooked tuber	low
82	Erosion of tuber upon cooking	No
83	Texture of cooked tuber	Smooth
84	Stickiness of cooked tuber	Sticky
85	Flavour of cooked tuber	Very acceptable
86	Absence /Presence of moisture on cooked tuber	Absence
87	Bitterness of cooked tuber	Not bitter
88	Sweetness of cooked tuber	Not sweet
89	Overall assessment of cooked tuber	High
Tuber quality traits		
90	Dry matter (%)	34.79
91	Sugar (% FW)	0.37
92	Starch (% FW)	15.87
93	Fat (% DW)	0.90
94	Fibre (%DW)	0.52
95	Protein (%)	2.19
96	Anthracnose Susceptibility	Medium



RKP-2 / AD-03

Accession name/number		RKP-2 / AD-03
Place of Collection		RK Pur, Little Andaman
Year of collection		2015
Stem traits		
1	Days to emergence	43.67
2	Stem length at 20 days of emergence(cm)	31.67
3	Inter node number at 20 days	4.33
4	Stem colour at 20 days of emergence	Purplish Green
5	Presence/Absence of waxiness on stem	Absent
6	Presence/absence of wings	Present
7	Wing colour	Purple
8	Presence/absence of hairs	Absent
9	Presence/abs of spine	Absent
10	Presence/abs of coloured spot at spine base	Absent
11	Waxiness of plant	Low
Growth traits		
12	Plant type	Climbing
13	Vigour	High
14	Twining habit	Yes
15	Twining direction	Anticlockwise
16	Stem height	2-10 m
17	No. of stems/plant	2.33
18	Stem colour	Purplish green
19	No. of internodes to first branching	1.33
20	No. of branches above ground	4.00
21	Stem diameter at 15 cm from base (cm)	1.67
22	Stem cross section shape	Quadrangular
23	Internodal length at 1 m height (cm)	11.20
24	Absence/presence of waxiness	Absent
25	Absence/presence of wings	Present
26	Wing position	At the base
27	Wing size at 1 m height	1-2 mm
28	Wing colour	Green with purple edge
29	Presence/absence of ridges	Present
30	Scale leaf position	Opposite
Leaf traits- Tender leaves		
31	Leaf colour	Yellowish
32	Leaf margin colour	Purple
33	Vein colour	Purple
34	Petiole colour	All green with purple base
35	Petiole wing colour	Purple
Leaf traits- Matured leaves		
36	Position of leaves	Opposite
37	Leaf density	High
38	Leaf type	Simple

39	Leatheriness	No
40	Leaf colour	Dark green
41	Leaf vein colour (upper)	Green
42	Leaf vein colour (lower surface)	Green
43	Leaf margin colour	Green
44	Leaf shape	Ovate
45	Leaf apex shape	Acute
46	Distance between lobes	No measurable distance
47	Upward folding of leaf along main vein	Strong
48	Position of widest part of leaf	Middle
49	Tip length	2-5 mm
50	Tip colour	Light green
51	Petiole length	>_10 cm
52	PL in correlation to leaf blade	Long (> 2 cm)
53	Petiole colour	All green with purple base
54	Petiole wing colour	Purple
Aerial tuber traits		
55	Absence/presence of aerial tuber	Present
56	Tuber shape	Irregular
57	A tuber diameter	6-10 cm
58	Skin colour	Dark brown
59	Surface texture	Rough
60	Absence/presence of bumps	absent
61	Skin thickness	Thin
62	Flesh colour	Outer purple/inner yellowish
Tuber traits		
63	Tuber Length(cm)	15.55
64	Tuber Width(cm)	38.13
65	Per Tuber Weight(kg)	1.16
66	Total Yield	1.33
67	Tuber Shape	Flattened
68	Tendency of tuber branch	highly branched
69	Place where tuber branch	Upper Third
70	Roots on the tuber surface	Few
71	Place of roots on the tuber	Entire Tuber
72	Absence /presence of blisters on tuber surface	
73	Absence/presence of cracks on the tuber surface	Absence
Cooking quality traits		
74	Ease of peeling	Easy
75	Preferred cooking method	Boiled
76	Poundability of boiled tuber	Good
77	Cooking time to softness	20 min
78	Discolouration cooking water	Very low
79	Appearance of tuber after cooking	Good
80	Colour of tuber after cooking	White, not coloured
81	Attractiveness of cooked tuber	High

82	Erosion of tuber upon cooking	No
83	Texture of cooked tuber	Grainy
84	Stickiness of cooked tuber	Sticky
85	Flavour of cooked tuber	Very acceptable
86	Absence /Presence of moisture on cooked tuber	Absence
87	Bitterness of cooked tuber	Not bitter
88	Sweetness of cooked tuber	Not sweet
89	Overall assessment of cooked tuber	Intermediate
Tuber quality traits		
90	Dry matter (%)	33.03
91	Sugar (% FW)	0.41
92	Starch (% FW)	15.81
93	Fat (% DW)	2.05
94	Fibre (%DW)	0.56
95	Protein (%)	3.06
96	Anthracoese Susceptibility	Low

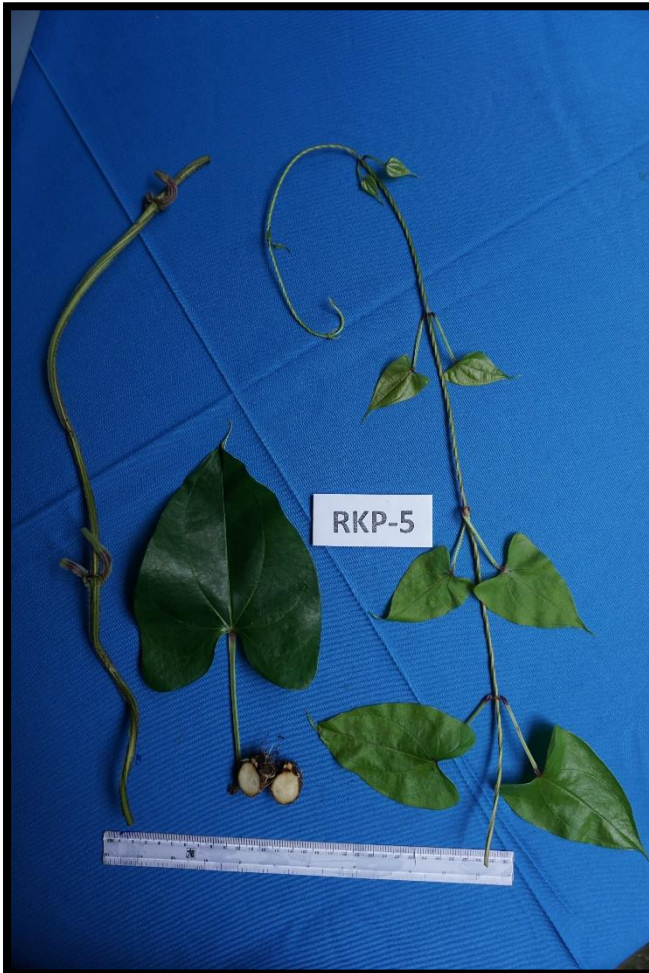


RKP-4 (IC-0623832)

Accession name/number		RKP-4 (IC-0623832)
Place of Collection		RK Pur, Little Andaman
Year of collection		2016
Stem traits		
1	Days to emergence	41.67
2	Stem length at 20 days of emergence(cm)	48.67
3	Inter node number at 20 days	4.00
4	Stem colour at 20 days of emergence	Purplish Green
5	Presence/Absence of waxiness on stem	Absent
6	Presence/absence of wings	Present
7	Wing colour	Purple
8	Presence/absence of hairs	Absent
9	Presence/abs of spine	Absent
10	Presence/abs of coloured spot at spine base	Absent
11	Waxiness of plant	Medium
Growth traits		
12	Plant type	Climbing
13	Vigour	High
14	Twining habit	Yes
15	Twining direction	Anticlockwise
16	Stem height	>10m
17	No. of stems/plant	2.67
18	Stem colour	Purplish green
19	No. of internodes to first branching	1.00
20	No. of branches above ground	3.00
21	Stem diameter at 15 cm from base (cm)	2.37
22	Stem cross section shape	Quadrangular
23	Internodal length at 1 m height (cm)	16.63
24	Absence/presence of waxiness	Absent
25	Absence/presence of wings	Present
26	Wing position	Above base
27	Wing size at 1 m height	1-2 mm
28	Wing colour	Purple
29	Presence/absence of ridges	Present
30	Scale leaf position	Opposite
Leaf traits- Tender leaves		
31	Leaf colour	Yellowish
32	Leaf margin colour	Purple
33	Vein colour	Purple
34	Petiole colour	All green with purple base
35	Petiole wing colour	Purple
Leaf traits- Matured leaves		
36	Position of leaves	Opposite
37	Leaf density	High

38	Leaf type	Simple
39	Leatheriness	No
40	Leaf colour	Dark green
41	Leaf vein colour (upper)	Green
42	Leaf vein colour (lower surface)	Green
43	Leaf margin colour	Green
44	Leaf shape	Cordate
45	Leaf apex shape	Acute
46	Distance between lobes	No measurable distance
47	Upward folding of leaf along main vein	Strong
48	Position of widest part of leaf	Middle
49	Tip length	> 5 mm
50	Tip colour	Light green
51	Petiole length	> 10 cm
52	PL in correlation to leaf blade	Long (> 2 cm)
53	Petiole colour	All green with purple base
54	Petiole wing colour	Purple
Aerial tuber traits		
55	Absence/presence of aerial tuber	Present
56	Tuber shape	Irregular
57	A tuber diameter	> 10 cm
58	Skin colour	Dark brown
59	Surface texture	Rough
60	Absence/presence of bumps	absent
61	Skin thickness	Thin
62	Flesh colour	outer purple/inner white
Tuber traits		
63	Tuber Length(cm)	17.19
64	Tuber Width(cm)	27.94
65	Per Tuber Weight(kg)	0.96
66	Total Yield	1.21
67	Tuber Shape	Irregular
68	Tendency of tuber branch	highly branched
69	Place where tuber branch	Middle
70	Roots on the tuber surface	Many
71	Place of roots on the tuber	Entire Tuber
72	Absence /presence of blisters on tuber surface	Absence
73	Absence/presence of cracks on the tuber surface	Absence
Cooking quality traits		
74	Ease of peeling	Easy
75	Preferred cooking method	Boiled
76	Poundability of boiled tuber	Good
77	Cooking time to softness	20 min
78	Discolouration cooking water	Very Low
79	Appearance of tuber after cooking	Good
80	Colour of tuber after cooking	White, Not Coloured

81	Attractiveness of cooked tuber	High
82	Erosion of tuber upon cooking	No
83	Texture of cooked tuber	Smooth
84	Stickiness of cooked tuber	Very Sticky
85	Flavour of cooked tuber	Very Acceptable
86	Absence /Presence of moisture on cooked tuber	Absence
87	Bitterness of cooked tuber	Not bitter
88	Sweetness of cooked tuber	Not Sweet
89	Overall assessment of cooked tuber	Intermediate
Tuber quality traits		
90	Dry matter (%)	29.06
91	Sugar (% FW)	0.45
92	Starch (% FW)	12.26
93	Fat (% DW)	1.60
94	Fibre (%DW)	0.62
95	Protein (%)	2.19
96	Anthracoese Susceptibility	Medium



RKP-5 / AD-04

Accession name/number		RKP-5 / AD-04
Place of Collection		RK Pur, Little Andaman
Year of collection		2017
Stem traits		
1	Days to emergence	43.67
2	Stem length at 20 days of emergence(cm)	45.00
3	Inter node number at 20 days	5.00
4	Stem colour at 20 days of emergence	Purplish Green
5	Presence/Absence of waxiness on stem	Absent
6	Presence/absence of wings	Present
7	Wing colour	Purple
8	Presence/absence of hairs	Absent
9	Presence/abs of spine	Absent
10	Presence/abs of coloured spot at spine base	Absent
11	Waxiness of plant	Absent
Growth traits		
12	Plant type	Climbing
13	Vigour	High
14	Twining habit	Yes
15	Twining direction	Anticlockwise
16	Stem height	2-10 m
17	No. of stems/plant	1.67
18	Stem colour	Purplish green
19	No. of internodes to first branching	1.33
20	No. of branches above ground	2.33
21	Stem diameter at 15 cm from base (cm)	2.20
22	Stem cross section shape	Quadrangular
23	Internodal length at 1 m height (cm)	12.70
24	Absence/presence of waxiness	Absent
25	Absence/presence of wings	Present
26	Wing position	At the base
27	Wing size at 1 m height	>2 mm
28	Wing colour	Green with purple edge
29	Presence/absence of ridges	Present
30	Scale leaf position	Both
Leaf traits- Tender leaves		
31	Leaf colour	Purplish
32	Leaf margin colour	Purple
33	Vein colour	Purple
34	Petiole colour	All green with purple base
35	Petiole wing colour	Purple
Leaf traits- Matured leaves		
36	Position of leaves	Opposite
37	Leaf density	High

38	Leaf type	Simple
39	Leatheriness	Yes
40	Leaf colour	Dark green
41	Leaf vein colour (upper)	Green
42	Leaf vein colour (lower surface)	Green
43	Leaf margin colour	Green
44	Leaf shape	Cordate
45	Leaf apex shape	Acute
46	Distance between lobes	Intermediate
47	Upward folding of leaf along main vein	Strong
48	Position of widest part of leaf	Third upper
49	Tip length	> 5 mm
50	Tip colour	Light green
51	Petiole length	6-9 cm
52	PL in correlation to leaf blade	Medium (= 2 cm)
53	Petiole colour	All green with purple base
54	Petiole wing colour	Purple
Aerial tuber traits		
55	Absence/presence of aerial tuber	Present
56	Tuber shape	Irregular
57	A tuber diameter	> 10 cm
58	Skin colour	Dark brown
59	Surface texture	Rough
60	Absence/presence of bumps	absent
61	Skin thickness	Thin
62	Flesh colour	Yellowish white
Tuber traits		
63	Tuber Length(cm)	22.87
64	Tuber Width(cm)	31.59
65	Per Tuber Weight(kg)	1.18
66	Total Yield	1.38
67	Tuber Shape	Cylindrical
68	Tendency of tuber branch	Branched
69	Place where tuber branch	Upper Third
70	Roots on the tuber surface	Many
71	Place of roots on the tuber	Entire Tuber
72	Absence /presence of blisters on tuber surface	Absence
73	Absence/presence of cracks on the tuber surface	Absence
Cooking quality traits		
74	Ease of peeling	Easy
75	Preferred cooking method	Boiled
76	Poundability of boiled tuber	Poor
77	Cooking time to softness	30 min
78	Discolouration cooking water	Intermediate
79	Appearance of tuber after cooking	Poor
80	Colour of tuber after cooking	White, not coloured

81	Attractiveness of cooked tuber	Intermediate
82	Erosion of tuber upon cooking	No
83	Texture of cooked tuber	Grainy
84	Stickiness of cooked tuber	Sticky
85	Flavour of cooked tuber	Acceptable
86	Absence /Presence of moisture on cooked tuber	Absence
87	Bitterness of cooked tuber	Not bitter
88	Sweetness of cooked tuber	Not sweet
89	Overall assessment of cooked tuber	Low
Tuber quality traits		
90	Dry matter (%)	35.30
91	Sugar (% FW)	0.36
92	Starch (% FW)	16.15
93	Fat (% DW)	1.05
94	Fibre (%DW)	0.52
95	Protein (%)	2.19
96	Anthracnose Susceptibility	Absent



RKP-6 / AD-05

Accession name/number		RKP-6 / AD-05
Place of Collection		RK Pur, Little Andaman
Year of collection		2017
Stem traits		
1	Days to emergence	43.67
2	Stem length at 20 days of emergence(cm)	46.67
3	Inter node number at 20 days	4.33
4	Stem colour at 20 days of emergence	Purplish Green
5	Presence/Absence of waxiness on stem	Absent
6	Presence/absence of wings	Present
7	Wing colour	Purplish Green
8	Presence/absence of hairs	Absent
9	Presence/abs of spine	Absent
10	Presence/abs of coloured spot at spine base	Absent
11	Waxiness of plant	Low
Growth traits		
12	Plant type	Climbing
13	Vigour	High
14	Twining habit	Yes
15	Twining direction	Anticlockwise
16	Stem height	>10m
17	No. of stems/plant	1.00
18	Stem colour	Green
19	No. of internodes to first branching	2.67
20	No. of branches above ground	2.00
21	Stem diameter at 15 cm from base (cm)	2.23
22	Stem cross section shape	octagonal
23	Internodal length at 1 m height (cm)	15.80
24	Absence/presence of waxiness	Absent
25	Absence/presence of wings	Present
26	Wing position	At the base
27	Wing size at 1 m height	>2 mm
28	Wing colour	Purple
29	Presence/absence of ridges	Present
30	Scale leaf position	Both
Leaf traits- Tender leaves		
31	Leaf colour	Yellowish
32	Leaf margin colour	Purple
33	Vein colour	Purple
34	Petiole colour	All green with purple base
35	Petiole wing colour	Purple
Leaf traits- Matured leaves		
36	Position of leaves	Opposite
37	Leaf density	High

38	Leaf type	Simple
39	Leatheriness	Yes
40	Leaf colour	Dark green
41	Leaf vein colour (upper)	Yellowish
42	Leaf vein colour (lower surface)	Green
43	Leaf margin colour	other
44	Leaf shape	cordate
45	Leaf apex shape	Acute
46	Distance between lobes	Intermediate
47	Upward folding of leaf along main vein	Strong
48	Position of widest part of leaf	Middle
49	Tip length	> 5 mm
50	Tip colour	Light green
51	Petiole length	6.9 cm
52	PL in correlation to leaf blade	Long (> 2 cm)
53	Petiole colour	All green with purple base
54	Petiole wing colour	Purple
Aerial tuber traits		
55	Absence/presence of aerial tuber	Present
56	Tuber shape	Irregular
57	A tuber diameter	6- 10 cm
58	Skin colour	Dark brown
59	Surface texture	Rough
60	Absence/presence of bumps	absent
61	Skin thickness	Thin
62	Flesh colour	Outer purple/inner yellowish
Tuber traits		
63	Tuber Length(cm)	22.45
64	Tuber Width(cm)	33.05
65	Per Tuber Weight(kg)	0.82
66	Total Yield	1.38
67	Tuber Shape	Cylindrical
68	Tendency of tuber branch	Highly branch
69	Place where tuber branch	Upper third
70	Roots on the tuber surface	Many
71	Place of roots on the tuber	Entire
72	Absence /presence of blisters on tuber surface	Absence
73	Absence/presence of cracks on the tuber surface	Absence
Cooking quality traits		
74	Ease of peeling	Easy
75	Preferred cooking method	Boiled
76	Poundability of boiled tuber	Good
77	Cooking time to softness	20 min
78	Discolouration cooking water	Very Low
79	Appearance of tuber after cooking	Good
80	Colour of tuber after cooking	White, Not Coloured

81	Attractiveness of cooked tuber	Low
82	Erosion of tuber upon cooking	No
83	Texture of cooked tuber	Grainy
84	Stickiness of cooked tuber	Sticky
85	Flavour of cooked tuber	Very Acceptable
86	Absence /Presence of moisture on cooked tuber	Absence
87	Bitterness of cooked tuber	Not bitter
88	Sweetness of cooked tuber	Sweet
89	Overall assessment of cooked tuber	High
Tuber quality traits		
90	Dry matter (%)	26.96
91	Sugar (% FW)	0.29
92	Starch (% FW)	12.68
93	Fat (% DW)	0.45
94	Fibre (%DW)	0.28
95	Protein (%)	2.63
96	Anthraco nose Susceptibility	Low

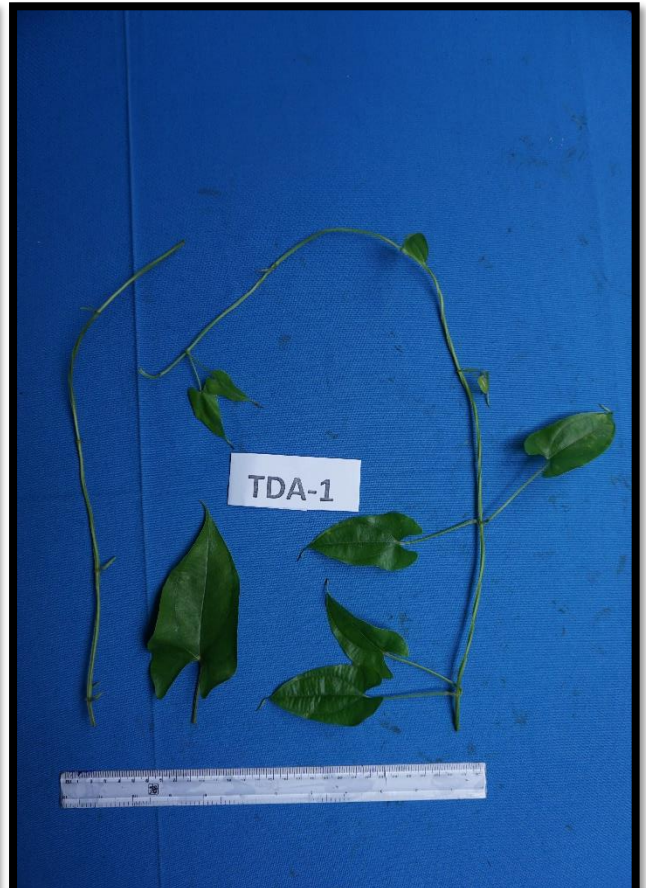


Bolta (IC-0623825)

Accession name/number		Bolta (IC-0623825)
Place of Collection		Tapoinming, Car Nicobar
Year of collection		2012
Stem traits		
1	Days to emergence	36.33
2	Stem length at 20 days of emergence(cm)	37.33
3	Inter node number at 20 days	4.37
4	Stem colour at 20 days of emergence	Green
5	Presence/Absence of waxiness on stem	Absent
6	Presence/absence of wings	Present
7	Wing colour	Green
8	Presence/absence of hairs	Absent
9	Presence/abs of spine	Absent
10	Presence/abs of coloured spot at spine base	Absent
11	Waxiness of plant	Medium
Growth traits		
12	Plant type	Climbing
13	Vigour	Low
14	Twining habit	Yes
15	Twining direction	Anticlockwise
16	Stem height	2-10 m
17	No. of stems/plant	1.00
18	Stem colour	Green
19	No. of internodes to first branching	1.33
20	No. of branches above ground	1.00
21	Stem diameter at 15 cm from base (cm)	1.67
22	Stem cross section shape	other
23	Internodal length at 1 m height (cm)	12.33
24	Absence/presence	Absent
25	Absence/presence of wings	Present
26	Wing position	At the base
27	Wing size at 1 m height	1-2 mm
28	Wing colour	Green
29	Presence/absence of ridges	Present
30	Scale leaf position	Both
Leaf traits- Tender leaves		
31	Leaf colour	Green
32	Leaf margin colour	Green
33	Vein colour	Green
34	Petiole colour	All green with purple base
35	Petiole wing colour	Purple
Leaf traits- Matured leaves		
36	Position of leaves	Opposite
37	Leaf density	High

38	Leaf type	Simple
39	Leatheriness	Yes
40	Leaf colour	Dark green
41	Leaf vein colour (upper)	Green
42	Leaf vein colour (lower surface)	Green
43	Leaf margin colour	Green
44	Leaf shape	Ovate
45	Leaf apex shape	Acute
46	Distance between lobes	Intermediate
47	Upward folding of leaf along main vein	Strong
48	Position of widest part of leaf	Middle
49	Tip length	> 5 mm
50	Tip colour	Light green
51	Petiole length	6-9 cm
52	PL in correlation to leaf blade	Long (> 2 cm)
53	Petiole colour	All green with purple base
54	Petiole wing colour	Green with purple edge
Aerial tuber traits		
55	Absence/presence of aerial tuber	Present
56	Tuber shape	Elongate
57	A tuber diameter	2.5 cm
58	Skin colour	Dark brown
59	Surface texture	Rough
60	Absence/presence of bumps	absent
61	Skin thickness	Thin
62	Flesh colour	Outer purple/inner yellowish
Tuber traits		
63	Tuber Length(cm)	18.33
64	Tuber Width(cm)	19.52
65	Per Tuber Weight(kg)	1.17
66	Total Yield	1.43
67	Tuber Shape	Irregular
68	Tendency of tuber branch	Branched
69	Place where tuber branch	Middle
70	Roots on the tuber surface	Few
71	Place of roots on the tuber	Entire Tuber
72	Absence /presence of blisters on tuber surface	Absence
73	Absence/presence of cracks on the tuber surface	Presence
Cooking quality traits		
74	Ease of peeling	Difficult
75	Preferred cooking method	Boiled
76	Poundability of boiled tuber	Poor
77	Cooking time to softness	35 min
78	Discolouration cooking water	Very low
79	Appearance of tuber after cooking	Poor
80	Colour of tuber after cooking	White, not coloured

81	Attractiveness of cooked tuber	Low
82	Erosion of tuber upon cooking	No
83	Texture of cooked tuber	Grainy
84	Stickiness of cooked tuber	Sticky
85	Flavour of cooked tuber	Acceptable
86	Absence /Presence of moisture on cooked tuber	Absence
87	Bitterness of cooked tuber	Not bitter
88	Sweetness of cooked tuber	Sweet
89	Overall assessment of cooked tuber	Intermediate
Tuber quality traits		
90	Dry matter (%)	25.41
91	Sugar (% FW)	0.36
92	Starch (% FW)	12.51
93	Fat (% DW)	0.90
94	Fibre (%DW)	1.04
95	Protein (%)	2.19
96	Anthracnose Susceptibility	Low



TDA-1 (IC-0623828)

Accession name/number		TDA-1 (IC-0623828)
Place of Collection		Terrasa, Nicobar
Year of collection		2016
Stem traits		
1	Days to emergence	41.33
2	Stem length at 20 days of emergence(cm)	45.00
3	Inter node number at 20 days	4.00
4	Stem colour at 20 days of emergence	Green
5	Presence/Absence of waxiness on stem	Absent
6	Presence/absence of wings	Present
7	Wing colour	Green
8	Presence/absence of hairs	Absent
9	Presence/abs of spine	Absent
10	Presence/abs of coloured spot at spine base	Absent
11	Waxiness of plant	Low
Growth traits		
12	Plant type	Climbing
13	Vigour	High
14	Twining habit	
15	Twining direction	Anticlockwise
16	Stem height	>10m
17	No. of stems/plant	2.67
18	Stem colour	Green
19	No. of internodes to first branching	2.67
20	No. of branches above ground	2.00
21	Stem diameter at 15 cm from base (cm)	1.83
22	Stem cross section shape	Quadrangular
23	Internodal length at 1 m height (cm)	8.67
24	Absence/presence of waxiness	Absent
25	Absence/presence of wings	Present
26	Wing position	At the base
27	Wing size at 1 m height	>2 mm
28	Wing colour	Green
29	Presence/absence of ridges	Present
30	Scale leaf position	Both
Leaf traits- Tender leaves		
31	Leaf colour	Green
32	Leaf margin colour	Purple
33	Vein colour	Purple
34	Petiole colour	All green with purple base
35	Petiole wing colour	Green
Leaf traits- Matured leaves		
36	Position of leaves	Opposite

37	Leaf density	High
38	Leaf type	Simple
39	Leatheriness	No
40	Leaf colour	Dark green
41	Leaf vein colour (upper)	Green
42	Leaf vein colour (lower surface)	Green
43	Leaf margin colour	Green
44	Leaf shape	Cordate
45	Leaf apex shape	Acute
46	Distance between lobes	Intermediate
47	Upward folding of leaf along main vein	Strong
48	Position of widest part of leaf	Middle
49	Tip length	2-5 mm
50	Tip colour	Light green
51	Petiole length	<_ 5 cm
52	PL in correlation to leaf blade	Short (< 2 cm)
53	Petiole colour	All green with purple base
54	Petiole wing colour	Green
Aerial tuber traits		
55	Absence/presence of aerial tuber	Present
56	Tuber shape	Irregular
57	A tuber diameter	> 10 cm
58	Skin colour	Dark brown
59	Surface texture	Rough
60	Absence/presence of bumps	absent
61	Skin thickness	Thin
62	Flesh colour	Yellowish white
Tuber traits		
63	Tuber Length(cm)	13.67
64	Tuber Width(cm)	32.83
65	Per Tuber Weight(kg)	0.98
66	Total Yield	1.41
67	Tuber Shape	Cylindrical
68	Tendency of tuber branch	Branched
69	Place where tuber branch	Upper Third
70	Roots on the tuber surface	Many
71	Place of roots on the tuber	Entire Tuber
72	Absence /presence of blisters on tuber surface	Absence
73	Absence/presence of cracks on the tuber surface	Absence
Cooking quality traits		
74	Ease of peeling	Easy
75	Preferred cooking method	Boiled
76	Poundability of boiled tuber	Poor
77	Cooking time to softness	25 min
78	Discolouration cooking water	Intermediate
79	Appearance of tuber after cooking	Fair

80	Colour of tuber after cooking	White, Not Coloured
81	Attractiveness of cooked tuber	Low
82	Erosion of tuber upon cooking	No
83	Texture of cooked tuber	Grainy
84	Stickiness of cooked tuber	Very Sticky
85	Flavour of cooked tuber	Acceptable
86	Absence /Presence of moisture on cooked tuber	Absence
87	Bitterness of cooked tuber	Not bitter
88	Sweetness of cooked tuber	Not Sweet
89	Overall assessment of cooked tuber	Low
Tuber quality traits		
90	Dry matter (%)	31.06
91	Sugar (% FW)	0.40
92	Starch (% FW)	11.51
93	Fat (% DW)	0.70
94	Fibre (%DW)	1.38
95	Protein (%)	2.82
96	Anthracoze Susceptibility	Low